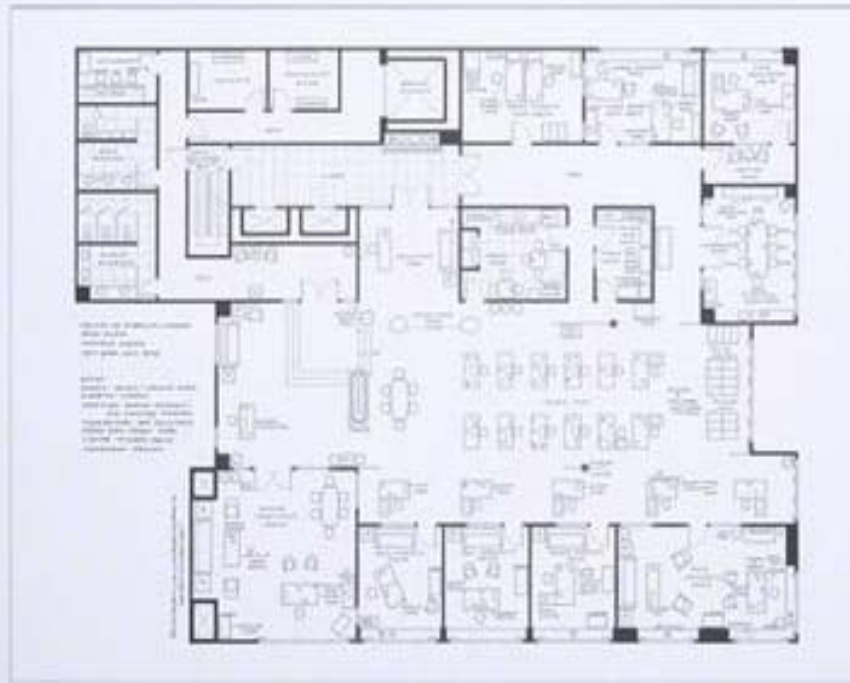


# FLOORPLANS

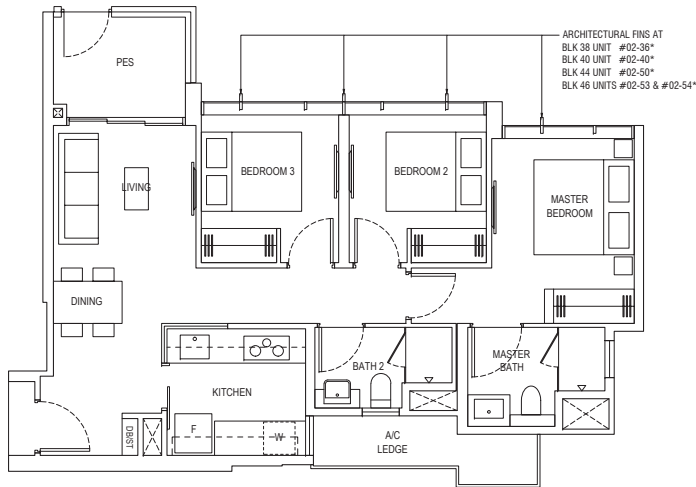


3-BEDROOM

Type A1a-P

78 sqm / 840 sq ft

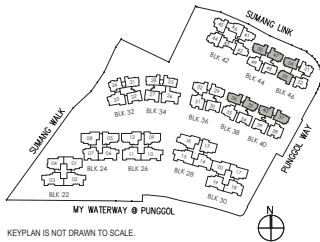
BLK 38  
#02-33, #02-36\*  
BLK 40  
#02-37, #02-40\*  
BLK 44  
#02-47, #02-50\*  
BLK 46  
#02-53, #02-54\*



\*Mirror Image



Area includes air-con (A/C) ledge, balcony and strata void where applicable. Some units are mirror images of the apartment plans shown in the brochure. Please refer to the key plan for orientation. The plans are subject to change as may be approved by relevant authorities. All floor plans are approximate measurements only and are subject to government re-survey. The balcony shall not be enclosed unless with the approved balcony screen. For an illustration of the approved balcony screen, please refer to the diagram annexed hereto as "Annexure A".

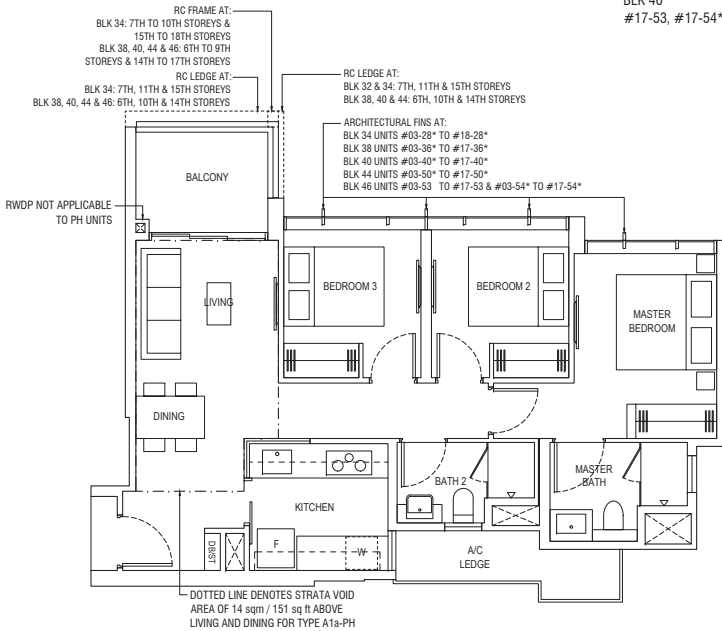


3-BEDROOM

Type A1a

78 sqm / 840 sq ft

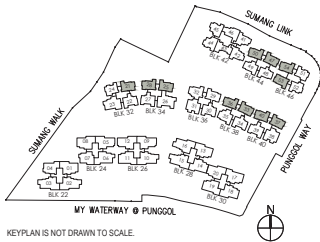
BLK 32  
#03-21 to #17-21  
BLK 34  
#03-25 to #17-25, #03-28\* to #17-28\*  
BLK 38  
#03-33 to #16-33, #03-36\* to #16-36\*  
BLK 40  
#03-37 to #16-37, #03-40\* to #16-40\*  
BLK 44  
#03-47 to #16-47, #03-50\* to #16-50\*  
BLK 46  
#03-53 to #16-53, #03-54\* to #16-54\*



\*Mirror Image



Area includes air-con (A/C) ledge, balcony and strata void where applicable. Some units are mirror images of the apartment plans shown in the brochure. Please refer to the key plan for orientation. The plans are subject to change as may be approved by relevant authorities. All floor plans are approximate measurements only and are subject to government re-survey. The balcony shall not be enclosed unless with the approved balcony screen. For an illustration of the approved balcony screen, please refer to the diagram annexed hereto as "Annexure A".



3-BEDROOM PENTHOUSE

Type A1a-PH

92 sqm / 990 sq ft

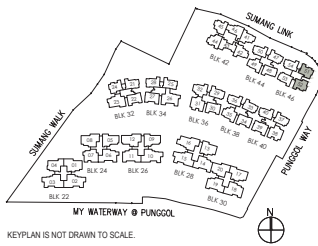
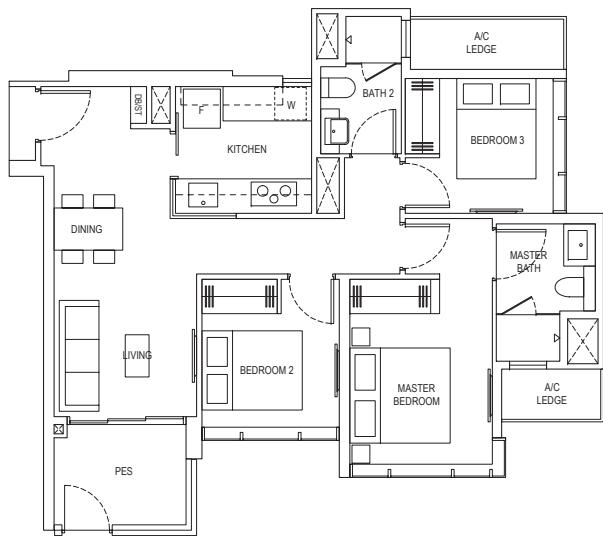
INCLUDING STRATA VOID OF 14 sqm / 151 sq ft ABOVE LIVING & DINING. APPROXIMATE 4.5m FLOOR TO CEILING HEIGHT AT LIVING & DINING

BLK 32  
#18-21  
BLK 34  
#18-25, #18-28\*  
BLK 38  
#17-33, #17-36\*  
BLK 40  
#17-37, #17-40\*  
BLK 44  
#17-47, #17-50\*  
BLK 46  
#17-53, #17-54\*

Type A1b-P

81 sqm / 872 sq ft

BLK 46  
#02-51\*, #02-52

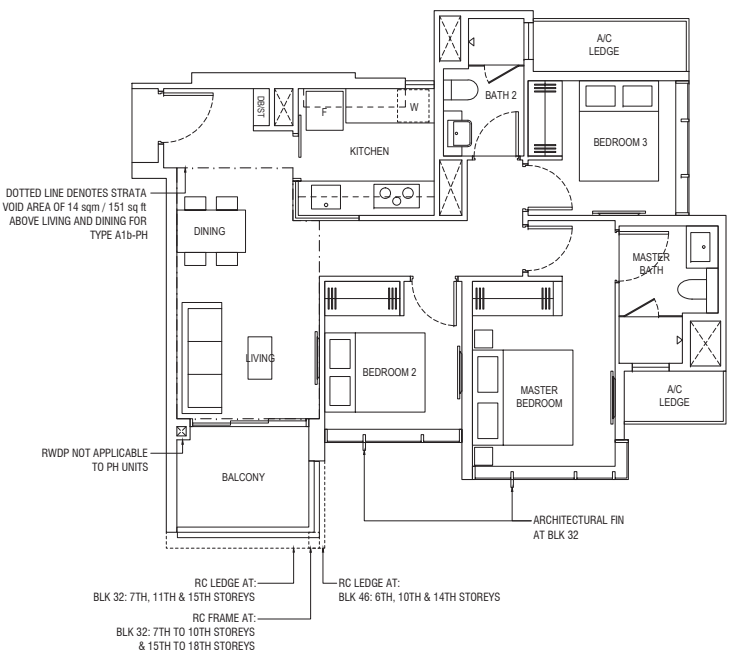


\*Mirror Image  
Area includes air-con (A/C) ledge, balcony and strata void where applicable. Some units are mirror images of the apartment plans shown in the brochure. Please refer to the key plan for orientation. The plans are subject to change as may be approved by relevant authorities. All floor plans are approximate measurements only and are subject to government re-survey. The balcony shall not be enclosed unless with the approved balcony screen. For an illustration of the approved balcony screen, please refer to the diagram annexed hereto as "Annexure A".

Type A1b

81 sqm / 872 sq ft

BLK 32  
#03-24 to #17-24  
BLK 46  
#03-51\* to #16-51\*, #03-52 to #16-52

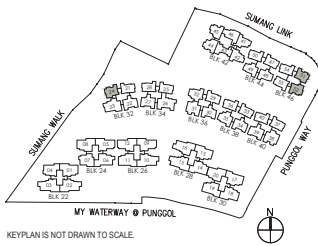


\*Mirror Image  
Area includes air-con (A/C) ledge, balcony and strata void where applicable. Some units are mirror images of the apartment plans shown in the brochure. Please refer to the key plan for orientation. The plans are subject to change as may be approved by relevant authorities. All floor plans are approximate measurements only and are subject to government re-survey. The balcony shall not be enclosed unless with the approved balcony screen. For an illustration of the approved balcony screen, please refer to the diagram annexed hereto as "Annexure A".

Type A1b-PH

95 sqm / 1023 sq ft  
INCLUDING STRATA VOID OF 14 sqm / 151 sq ft  
ABOVE LIVING & DINING. APPROXIMATE 4.5m  
FLOOR TO CEILING HEIGHT AT LIVING & DINING

BLK 32  
#18-24  
BLK 46  
#17-51\*, #17-52

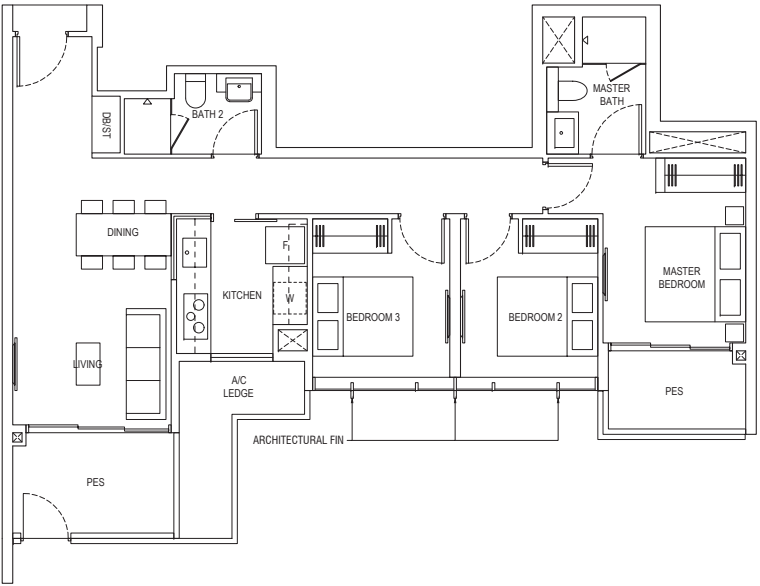


3-BEDROOM

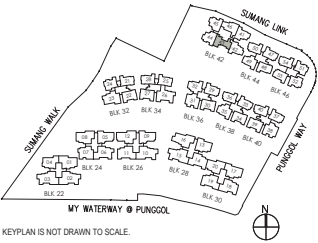
Type A1c-P

92 sqm / 990 sq ft

BLK 42  
#02-43



Area includes air-con (A/C) ledge, balcony and strata void where applicable. Some units are mirror images of the apartment plans shown in the brochure. Please refer to the key plan for orientation. The plans are subject to change as may be approved by relevant authorities. All floor plans are approximate measurements only and are subject to government re-survey. The balcony shall not be enclosed unless with the approved balcony screen. For an illustration of the approved balcony screen, please refer to the diagram annexed hereto as "Annexure A".



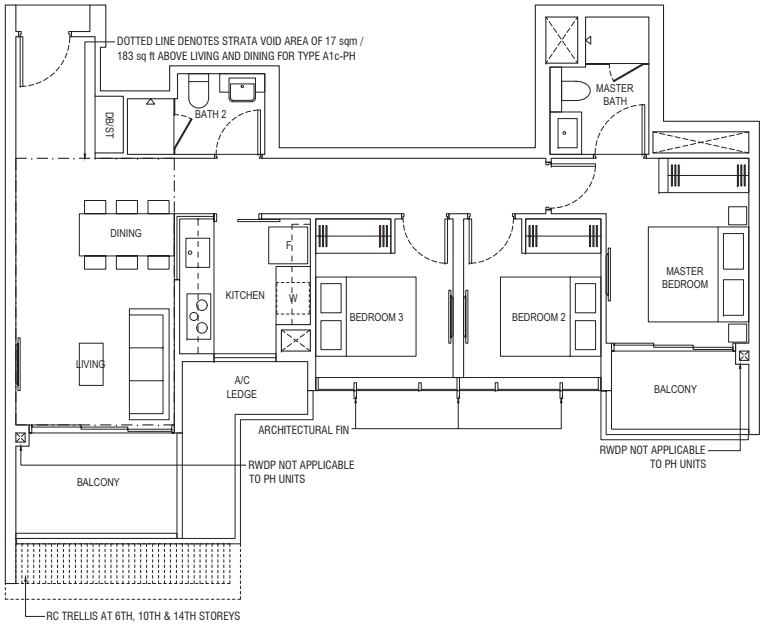
KEYPLAN IS NOT DRAWN TO SCALE.

3-BEDROOM

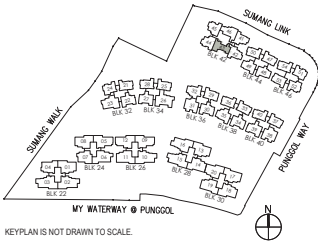
Type A1c

92 sqm / 990 sq ft

BLK 42  
#03-43 to #16-43



Area includes air-con (A/C) ledge, balcony and strata void where applicable. Some units are mirror images of the apartment plans shown in the brochure. Please refer to the key plan for orientation. The plans are subject to change as may be approved by relevant authorities. All floor plans are approximate measurements only and are subject to government re-survey. The balcony shall not be enclosed unless with the approved balcony screen. For an illustration of the approved balcony screen, please refer to the diagram annexed hereto as "Annexure A".



KEYPLAN IS NOT DRAWN TO SCALE.

3-BEDROOM PENTHOUSE

Type A1c-PH

109 sqm / 1173 sq ft  
INCLUDING STRATA VOID OF 17 sqm / 183 sq ft  
ABOVE LIVING & DINING. APPROXIMATE 4.5m  
FLOOR TO CEILING HEIGHT AT LIVING & DINING

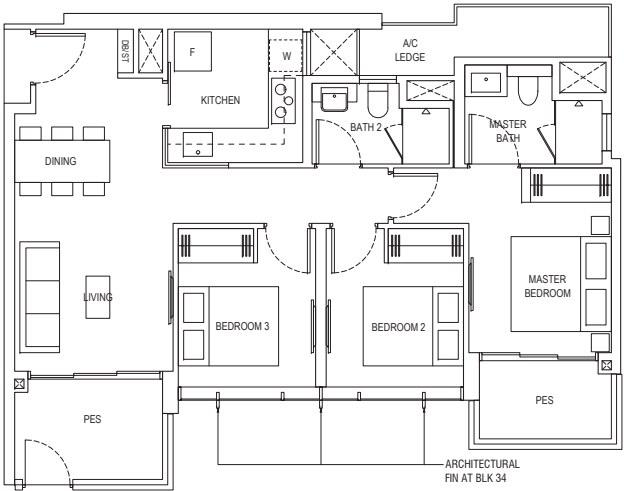
BLK 42  
#17-43

3-BEDROOM

Type A1d-P

88 sqm / 947 sq ft

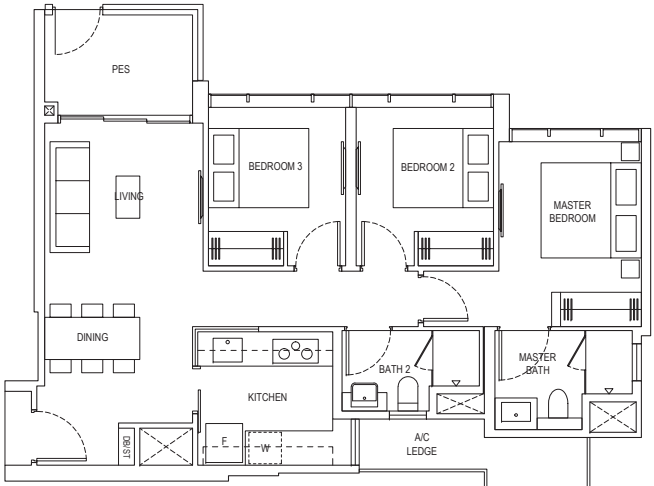
BLK 32  
#02-22  
BLK 34  
#02-27\*  
BLK 36  
#02-30  
BLK 38  
#02-34



Type A1e-P

84 sqm / 904 sq ft

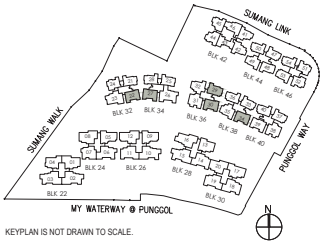
BLK 36  
#02-29



\*Mirror Image



Area includes air-con (A/C) ledge, balcony and strata void where applicable. Some units are mirror images of the apartment plans shown in the brochure. Please refer to the key plan for orientation. The plans are subject to change as may be approved by relevant authorities. All floor plans are approximate measurements only and are subject to government re-survey. The balcony shall not be enclosed unless with the approved balcony screen. For an illustration of the approved balcony screen, please refer to the diagram annexed hereto as "Annexure A".



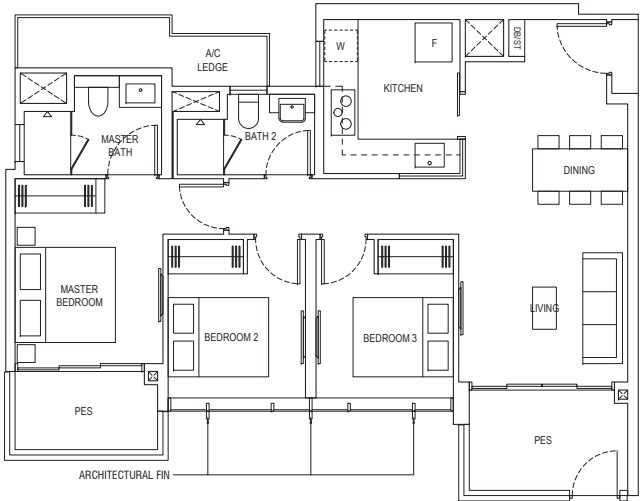
KEYPLAN IS NOT DRAWN TO SCALE.

3-BEDROOM

Type A1f-P

93 sqm / 1001 sq ft

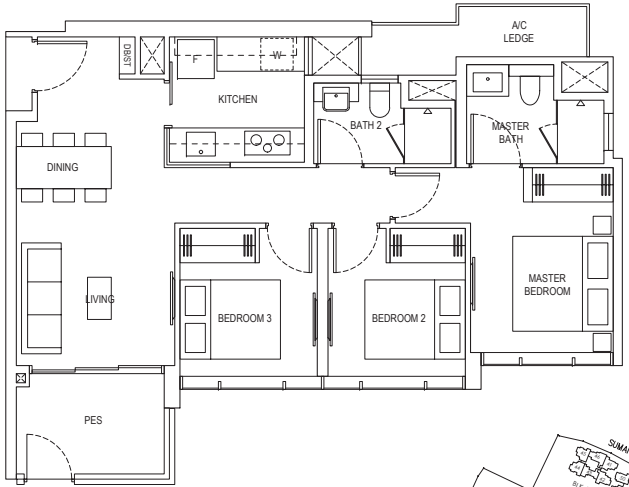
BLK 40  
#02-39



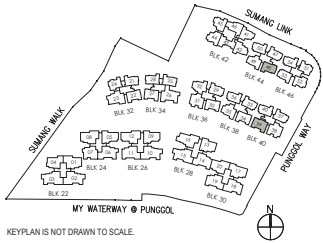
Type A1g-P

81 sqm / 872 sq ft

BLK 44  
#02-48



Area includes air-con (A/C) ledge, balcony and strata void where applicable. Some units are mirror images of the apartment plans shown in the brochure. Please refer to the key plan for orientation. The plans are subject to change as may be approved by relevant authorities. All floor plans are approximate measurements only and are subject to government re-survey. The balcony shall not be enclosed unless with the approved balcony screen. For an illustration of the approved balcony screen, please refer to the diagram annexed hereto as "Annexure A".



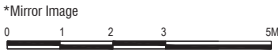
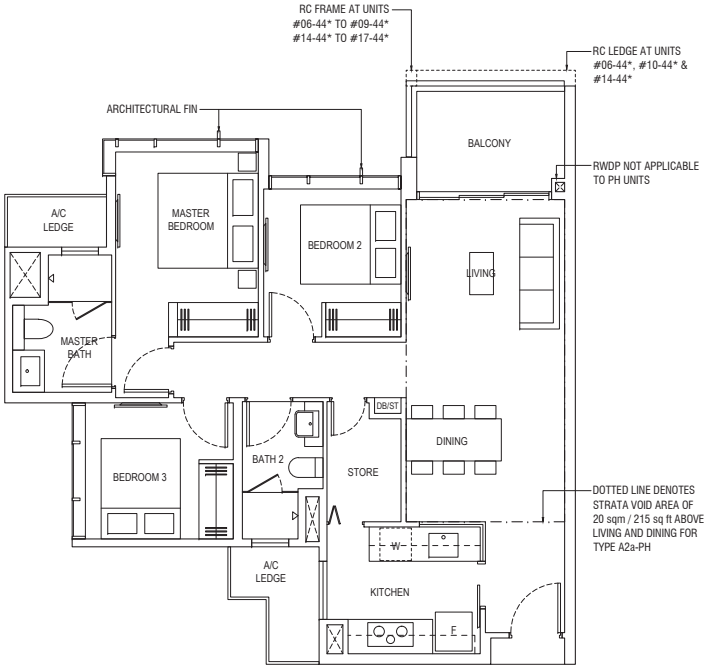
KEYPLAN IS NOT DRAWN TO SCALE.

3-BEDROOM SUPERIOR

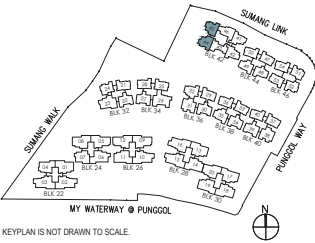
Type A2a

90 sqm / 969 sq ft

BLK 42  
#03-44\* to #16-44\*, #03-45 to #16-45



Area includes air-con (A/C) ledge, balcony and strata void where applicable. Some units are mirror images of the apartment plans shown in the brochure. Please refer to the key plan for orientation. The plans are subject to change as may be approved by relevant authorities. All floor plans are approximate measurements only and are subject to government re-survey. The balcony shall not be enclosed unless with the approved balcony screen. For an illustration of the approved balcony screen, please refer to the diagram annexed hereto as "Annexure A".



3-BEDROOM SUPERIOR PENTHOUSE

Type A2a-PH

110 sqm / 1184 sq ft  
INCLUDING STRATA VOID OF 20 sqm / 215 sq ft  
ABOVE LIVING & DINING. APPROXIMATE 4.5m  
FLOOR TO CEILING HEIGHT AT LIVING & DINING

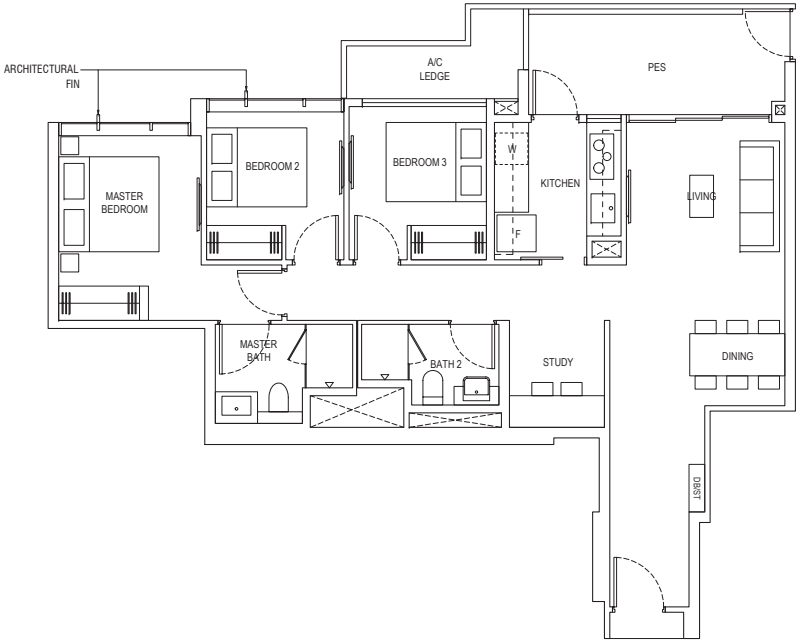
BLK 42  
#17-44\*, #17-45

3-BEDROOM SUPERIOR

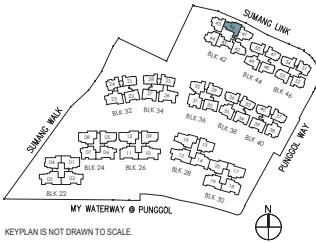
Type A2b-P

97 sqm / 1044 sq ft

BLK 42  
#02-46



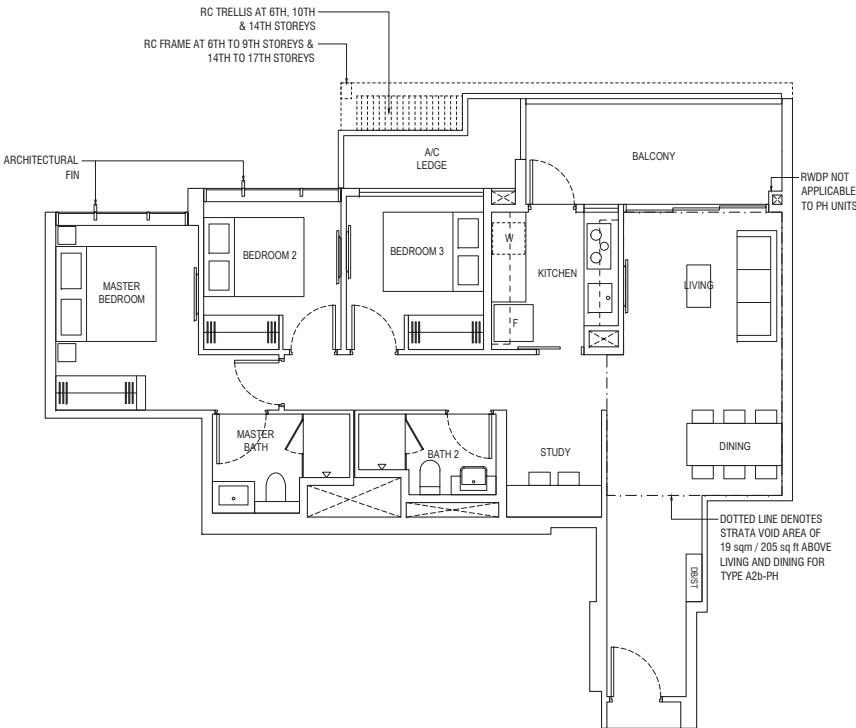
Area includes air-con (A/C) ledge, balcony and strata void where applicable. Some units are mirror images of the apartment plans shown in the brochure. Please refer to the key plan for orientation. The plans are subject to change as may be approved by relevant authorities. All floor plans are approximate measurements only and are subject to government re-survey. The balcony shall not be enclosed unless with the approved balcony screen. For an illustration of the approved balcony screen, please refer to the diagram annexed hereto as "Annexure A".



Type A2b

97 sqm / 1044 sq ft

BLK 42  
#03-46 to #16-46

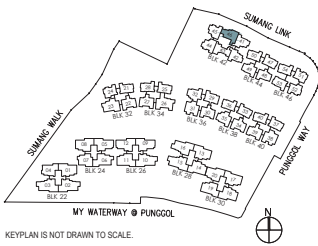


Area includes air-con (A/C) ledge, balcony and strata void where applicable. Some units are mirror images of the apartment plans shown in the brochure. Please refer to the key plan for orientation. The plans are subject to change as may be approved by relevant authorities. All floor plans are approximate measurements only and are subject to government re-survey. The balcony shall not be enclosed unless with the approved balcony screen. For an illustration of the approved balcony screen, please refer to the diagram annexed hereto as "Annexure A".

Type A2b-PH

116 sqm / 1249 sq ft  
INCLUDING STRATA VOID OF 19 sqm / 205 sq ft  
ABOVE LIVING & DINING. APPROXIMATE 4.5m  
FLOOR TO CEILING HEIGHT AT LIVING & DINING

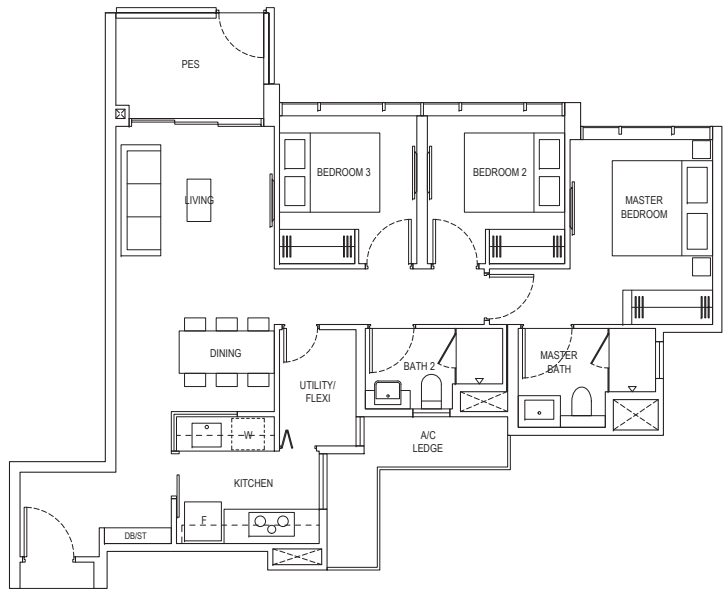
BLK 42  
#17-46



Type A2c-P

90 sqm / 969 sq ft

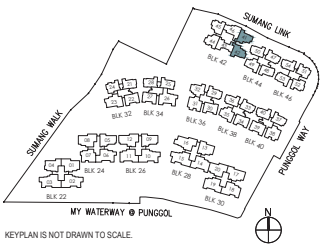
BLK 42  
#02-41, #02-42\*



\*Mirror Image



Area includes air-con (A/C) ledge, balcony and strata void where applicable. Some units are mirror images of the apartment plans shown in the brochure. Please refer to the key plan for orientation. The plans are subject to change as may be approved by relevant authorities. All floor plans are approximate measurements only and are subject to government re-survey. The balcony shall not be enclosed unless with the approved balcony screen. For an illustration of the approved balcony screen, please refer to the diagram annexed hereto as "Annexure A".

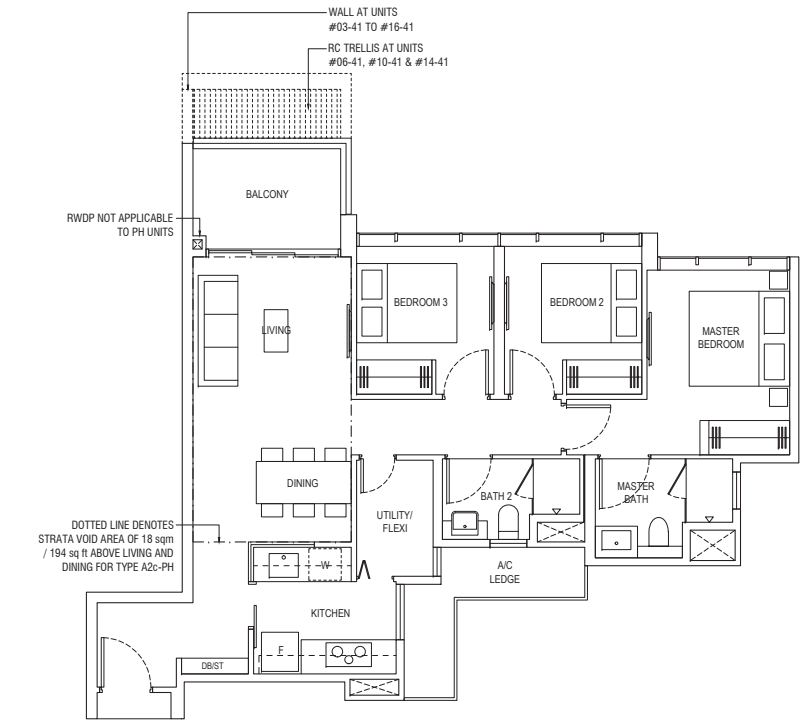


3-BEDROOM SUPERIOR

Type A2c

90 sqm / 969 sq ft

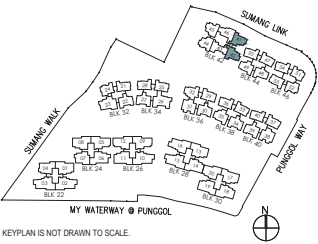
BLK 42  
#03-41 to #16-41, #03-42\* to #16-42\*



\*Mirror Image

0 1 2 3 5M

Area includes air-con (A/C) ledge, balcony and strata void where applicable. Some units are mirror images of the apartment plans shown in the brochure. Please refer to the key plan for orientation. The plans are subject to change as may be approved by relevant authorities. All floor plans are approximate measurements only and are subject to government re-survey. The balcony shall not be enclosed unless with the approved balcony screen. For an illustration of the approved balcony screen, please refer to the diagram annexed hereto as "Annexure A".



KEYPLAN IS NOT DRAWN TO SCALE.

3-BEDROOM SUPERIOR PENTHOUSE

Type A2c-PH

108 sqm / 1163 sq ft  
INCLUDING STRATA VOID OF 18 sqm / 194 sq ft  
ABOVE LIVING & DINING. APPROXIMATE 4.5m  
FLOOR TO CEILING HEIGHT AT LIVING & DINING

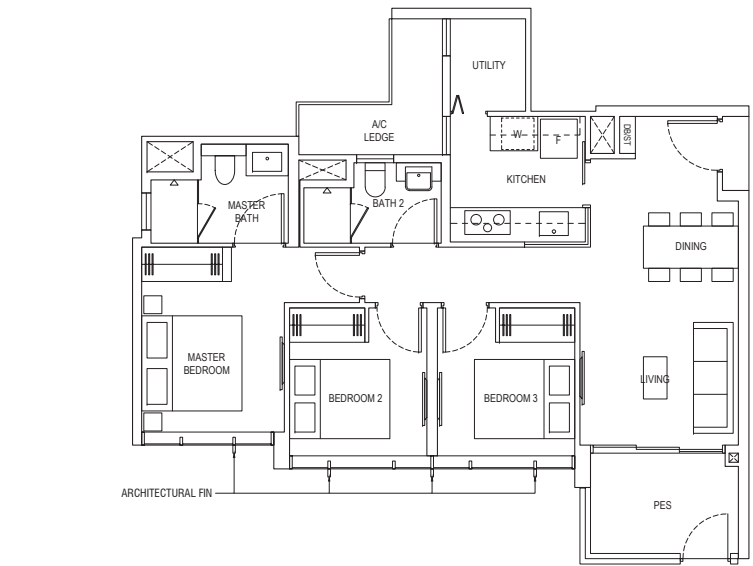
BLK 42  
#17-41, #17-42\*

3-BEDROOM SUPERIOR

Type A2d-P

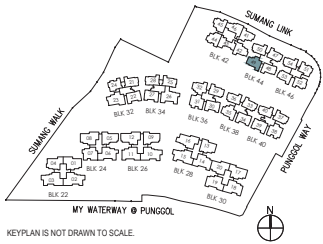
84 sqm / 904 sq ft

BLK 44  
#02-49



0 1 2 3 5M

Area includes air-con (A/C) ledge, balcony and strata void where applicable. Some units are mirror images of the apartment plans shown in the brochure. Please refer to the key plan for orientation. The plans are subject to change as may be approved by relevant authorities. All floor plans are approximate measurements only and are subject to government re-survey. The balcony shall not be enclosed unless with the approved balcony screen. For an illustration of the approved balcony screen, please refer to the diagram annexed hereto as "Annexure A".



KEYPLAN IS NOT DRAWN TO SCALE.



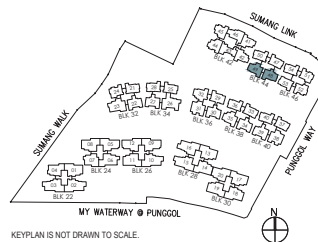
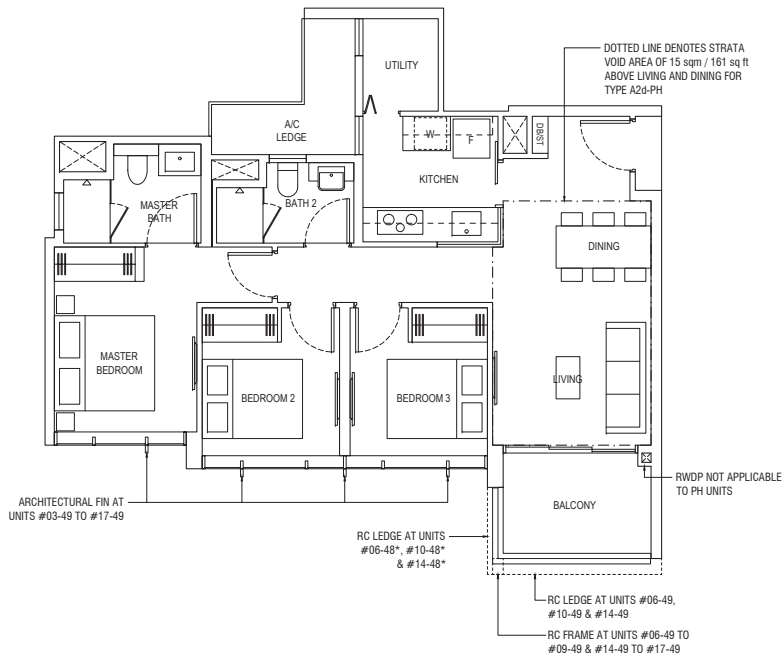
## 3-BEDROOM SUPERIOR

### Type A2d

84 sqm / 904 sq ft

BLK 44

#03-48\* to #16-48\*, #03-49 to #16-49



\*Mirror Image



Area includes air-con (A/C) ledge, balcony and strata void where applicable. Some units are mirror images of the apartment plans shown in the brochure. Please refer to the key plan for orientation. The plans are subject to change as may be approved by relevant authorities. All floor plans are approximate measurements only and are subject to government re-survey. The balcony shall not be enclosed unless with the approved balcony screen. For an illustration of the approved balcony screen, please refer to the diagram annexed hereto as "Annexure A".

## 3-BEDROOM SUPERIOR PENTHOUSE

### Type A2d-PH

99 sqm / 1066 sq ft

INCLUDING STRATA VOID OF 15 sqm / 161 sq ft ABOVE LIVING & DINING. APPROXIMATE 4.5m FLOOR TO CEILING HEIGHT AT LIVING & DINING

BLK 44

#17-48\*, #17-49

## 3-BEDROOM DELUXE

### Type A3a

92 sqm / 990 sq ft

BLK 32

#03-22 to #17-22

BLK 34

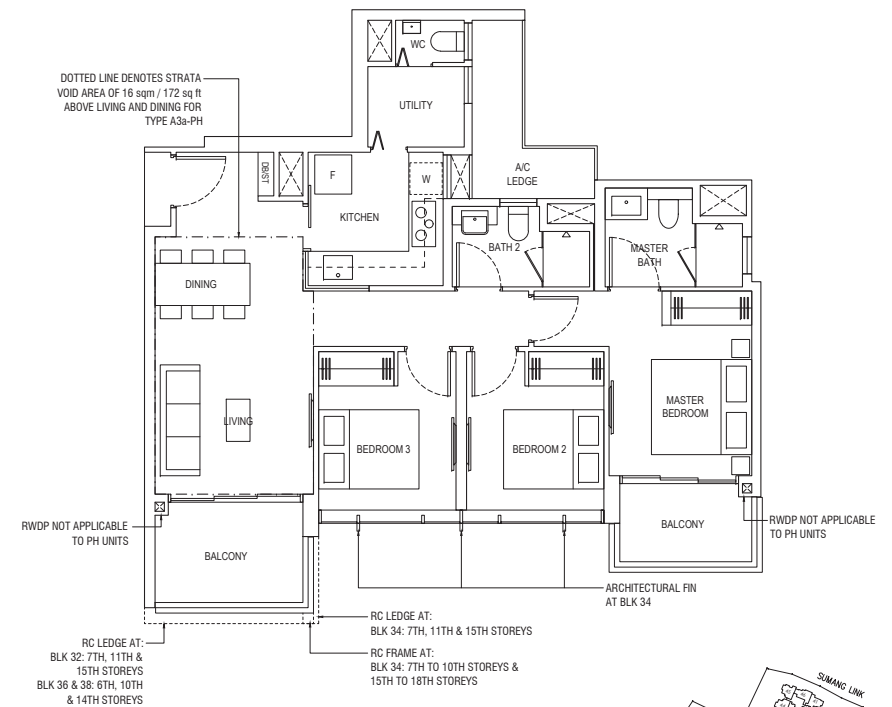
#03-27\* to #17-27\*

BLK 36

#03-30 to #16-30

BLK 38

#03-34 to #16-34



\*Mirror Image



Area includes air-con (A/C) ledge, balcony and strata void where applicable. Some units are mirror images of the apartment plans shown in the brochure. Please refer to the key plan for orientation. The plans are subject to change as may be approved by relevant authorities. All floor plans are approximate measurements only and are subject to government re-survey. The balcony shall not be enclosed unless with the approved balcony screen. For an illustration of the approved balcony screen, please refer to the diagram annexed hereto as "Annexure A".

## 3-BEDROOM DELUXE PENTHOUSE

### Type A3a-PH

108 sqm / 1163 sq ft

INCLUDING STRATA VOID OF 16 sqm / 172 sq ft ABOVE LIVING & DINING. APPROXIMATE 4.5m FLOOR TO CEILING HEIGHT AT LIVING & DINING

BLK 32

#18-22

BLK 34

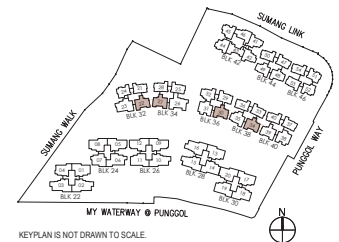
#18-27\*

BLK 36

#17-30

BLK 38

#17-34



3-BEDROOM DELUXE

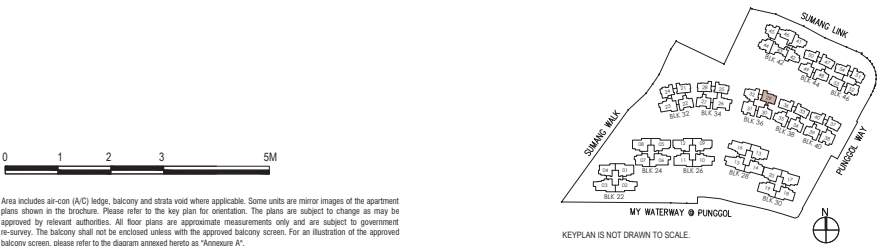
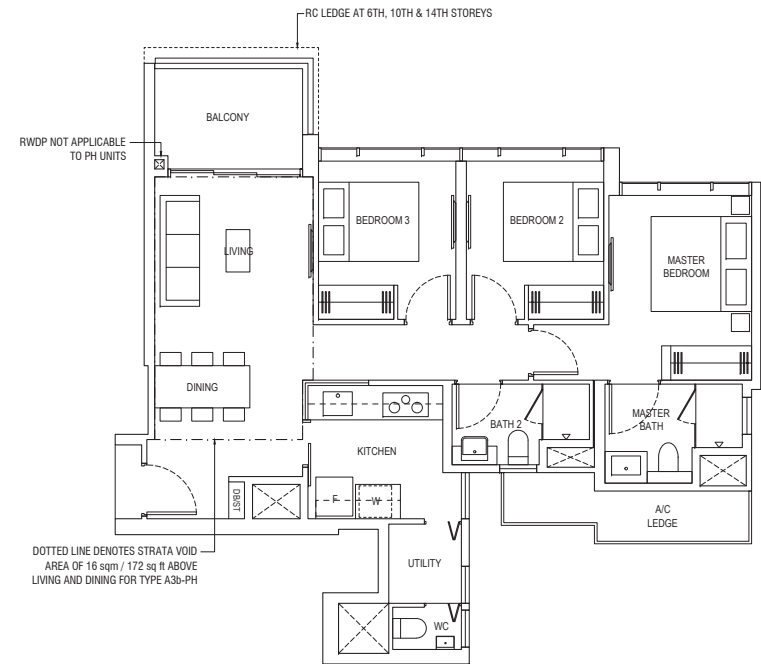
3-BEDROOM DELUXE PENTHOUSE

3-BEDROOM PREMIUM

Type A3b

88 sqm / 947 sq ft

BLK 36  
#03-29 to #16-29



Area includes air-con (A/C) ledge, balcony and strata void where applicable. Some units are mirror images of the apartment plans shown in the brochure. Please refer to the key plan for orientation. The plans are subject to change as may be approved by relevant authorities. All floor plans are approximate measurements only and are subject to government re-survey. The balcony shall not be enclosed unless with the approved balcony screen. For an illustration of the approved balcony screen, please refer to the diagram annexed hereto as "Annexure A".

Type A3b-PH

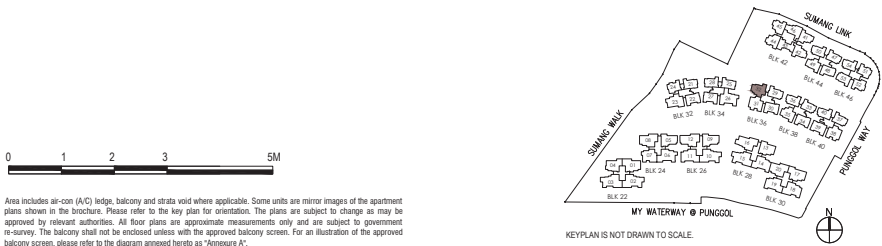
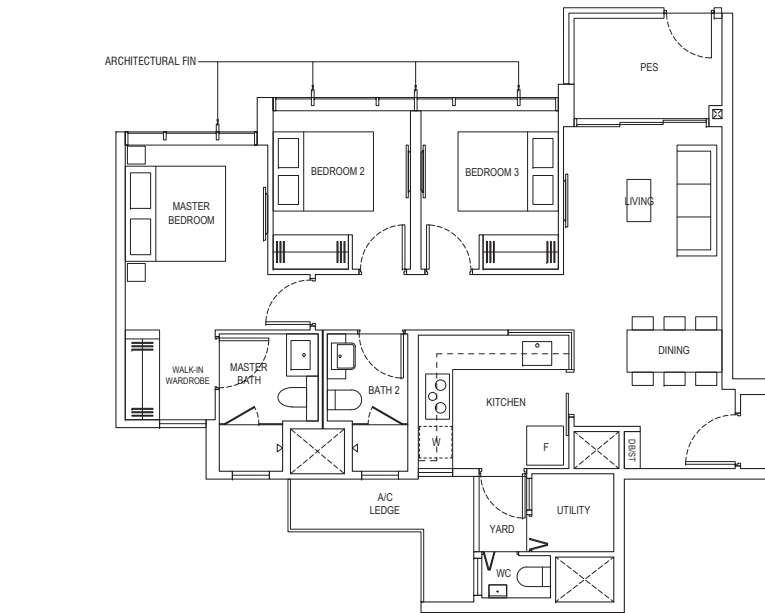
104 sqm / 1119 sq ft  
INCLUDING STRATA VOID OF 16 sqm / 172 sq ft  
ABOVE LIVING & DINING. APPROXIMATE 4.5m  
FLOOR TO CEILING HEIGHT AT LIVING & DINING

BLK 36  
#17-29

Type A4a-P

94 sqm / 1012 sq ft

BLK 36  
#02-32



Area includes air-con (A/C) ledge, balcony and strata void where applicable. Some units are mirror images of the apartment plans shown in the brochure. Please refer to the key plan for orientation. The plans are subject to change as may be approved by relevant authorities. All floor plans are approximate measurements only and are subject to government re-survey. The balcony shall not be enclosed unless with the approved balcony screen. For an illustration of the approved balcony screen, please refer to the diagram annexed hereto as "Annexure A".

3-BEDROOM PREMIUM

3-BEDROOM PREMIUM PENTHOUSE

3-BEDROOM PREMIUM

Type A4a

94 sqm / 1012 sq ft

BLK 36  
#03-32 to #16-32

Type A4a-PH

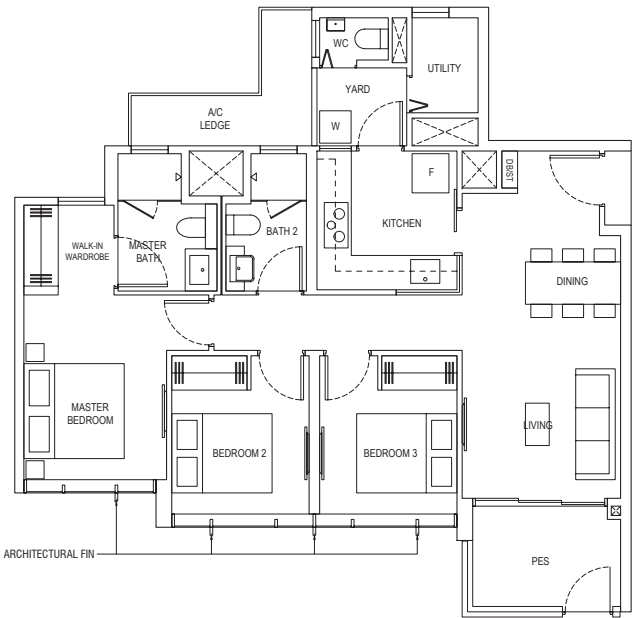
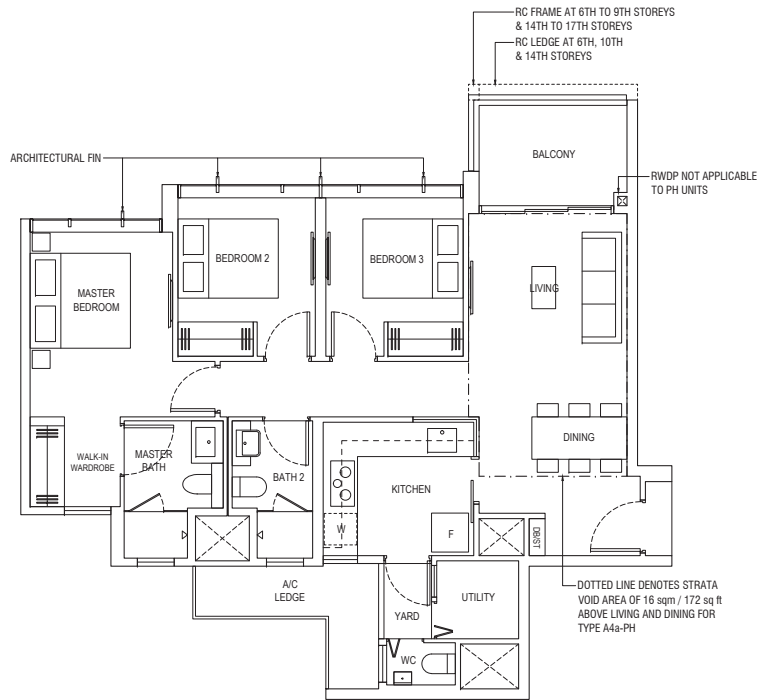
110 sqm / 1184 sq ft  
INCLUDING STRATA VOID OF 16 sqm / 172 sq ft  
ABOVE LIVING & DINING. APPROXIMATE 4.5m  
FLOOR TO CEILING HEIGHT AT LIVING & DINING

BLK 36  
#17-32

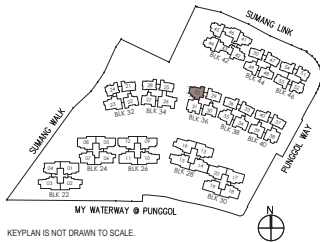
Type A4b-P

95 sqm / 1023 sq ft

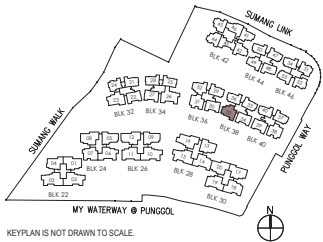
BLK 38  
#02-35



Area includes air-con (A/C) ledge, balcony and strata void where applicable. Some units are mirror images of the apartment plans shown in the brochure. Please refer to the key plan for orientation. The plans are subject to change as may be approved by relevant authorities. All floor plans are approximate measurements only and are subject to government re-survey. The balcony shall not be enclosed unless with the approved balcony screen. For an illustration of the approved balcony screen, please refer to the diagram annexed hereto as "Annexure A".



Area includes air-con (A/C) ledge, balcony and strata void where applicable. Some units are mirror images of the apartment plans shown in the brochure. Please refer to the key plan for orientation. The plans are subject to change as may be approved by relevant authorities. All floor plans are approximate measurements only and are subject to government re-survey. The balcony shall not be enclosed unless with the approved balcony screen. For an illustration of the approved balcony screen, please refer to the diagram annexed hereto as "Annexure A".



3-BEDROOM PREMIUM

3-BEDROOM PREMIUM PENTHOUSE

3-BEDROOM PREMIUM

3-BEDROOM PREMIUM PENTHOUSE

Type A4b

95 sqm / 1023 sq ft

BLK 38  
#03-35 to #16-35

Type A4b-PH

112 sqm / 1206 sq ft  
INCLUDING STRATA VOID OF 17 sqm / 183 sq ft  
ABOVE LIVING & DINING. APPROXIMATE 4.5m  
FLOOR TO CEILING HEIGHT AT LIVING & DINING

BLK 38  
#17-35

Type A4c

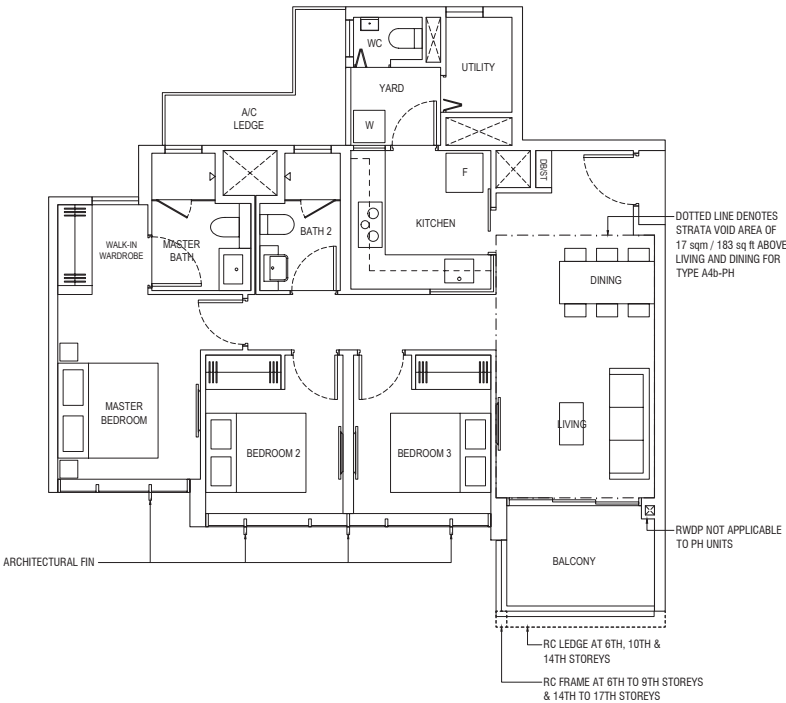
98 sqm / 1055 sq ft

BLK 40  
#03-39 to #16-39

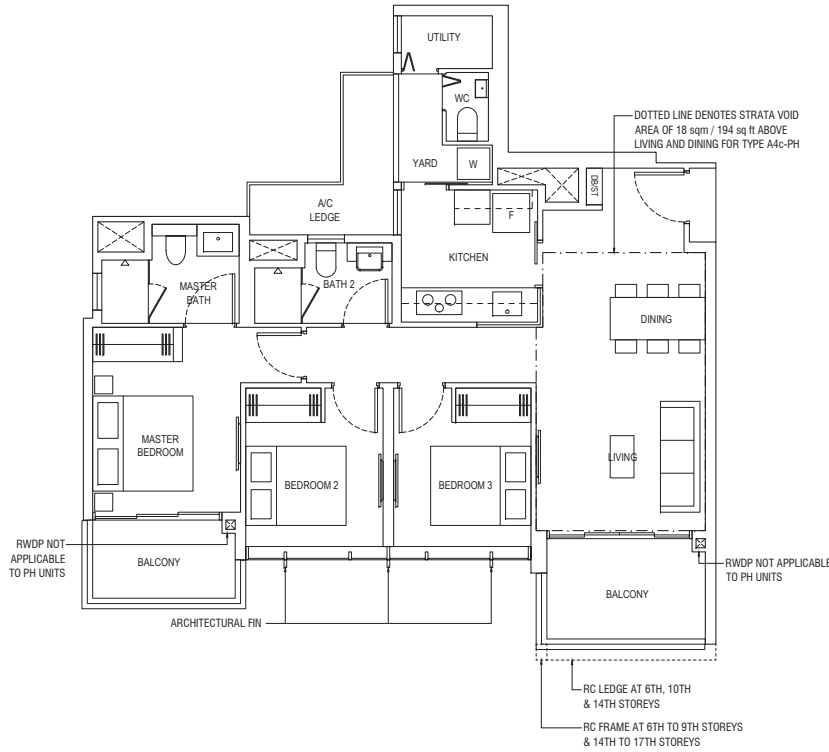
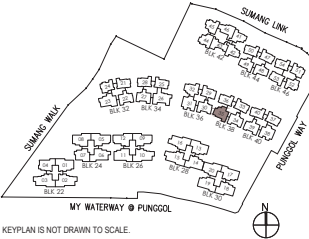
Type A4c-PH

116 sqm / 1249 sq ft  
INCLUDING STRATA VOID OF 18 sqm / 194 sq ft  
ABOVE LIVING & DINING. APPROXIMATE 4.5m  
FLOOR TO CEILING HEIGHT AT LIVING & DINING

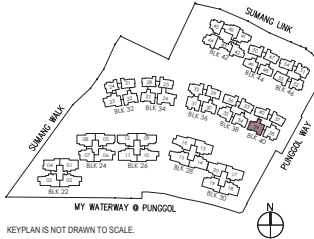
BLK 40  
#17-39



Area includes air-con (A/C) ledge, balcony and strata void where applicable. Some units are mirror images of the apartment plans shown in the brochure. Please refer to the key plan for orientation. The plans are subject to change as may be approved by relevant authorities. All floor plans are approximate measurements only and are subject to government re-survey. The balcony shall not be enclosed unless with the approved balcony screen. For an illustration of the approved balcony screen, please refer to the diagram annexed hereto as "Annexure A".



Area includes air-con (A/C) ledge, balcony and strata void where applicable. Some units are mirror images of the apartment plans shown in the brochure. Please refer to the key plan for orientation. The plans are subject to change as may be approved by relevant authorities. All floor plans are approximate measurements only and are subject to government re-survey. The balcony shall not be enclosed unless with the approved balcony screen. For an illustration of the approved balcony screen, please refer to the diagram annexed hereto as "Annexure A".



3-BEDROOM PREMIUM

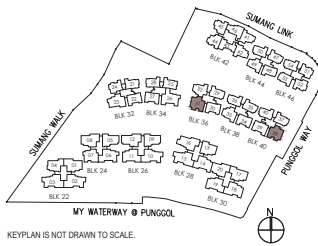
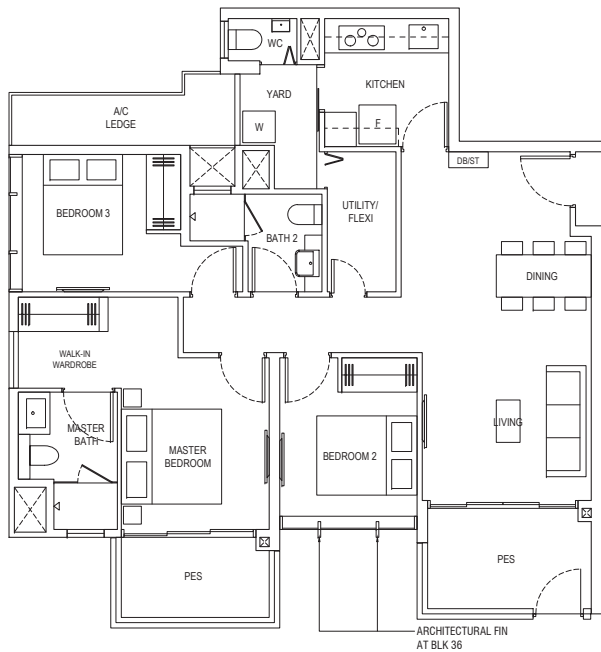
3-BEDROOM PREMIUM

3-BEDROOM PREMIUM PENTHOUSE

Type A4d-P

105 sqm / 1130 sq ft

BLK 36  
#02-31  
BLK 40  
#02-38\*

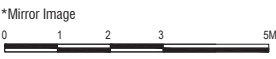
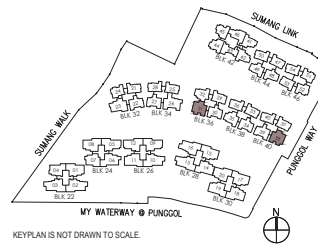
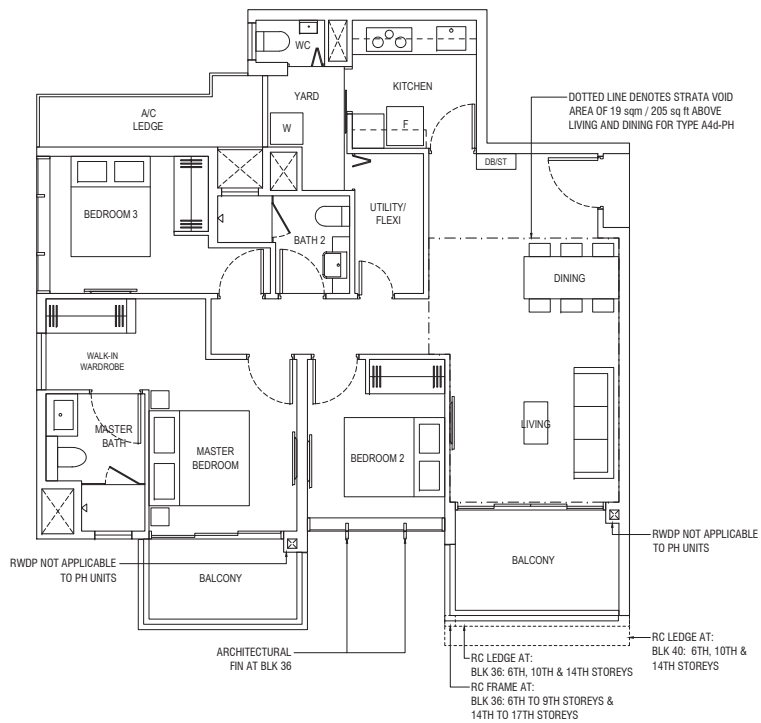


Area includes air-con (A/C) ledge, balcony and strata void where applicable. Some units are mirror images of the apartment plans shown in the brochure. Please refer to the key plan for orientation. The plans are subject to change as may be approved by relevant authorities. All floor plans are approximate measurements only and are subject to government re-survey. The balcony shall not be enclosed unless with the approved balcony screen. For an illustration of the approved balcony screen, please refer to the diagram annexed hereto as "Annexure A".

Type A4d

105 sqm / 1130 sq ft

BLK 36  
#03-31 to #16-31  
BLK 40  
#03-38\* to #16-38\*

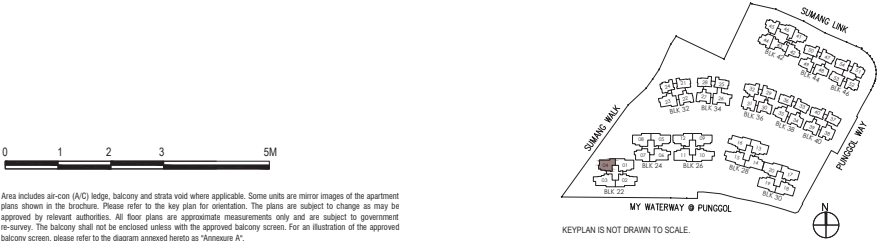
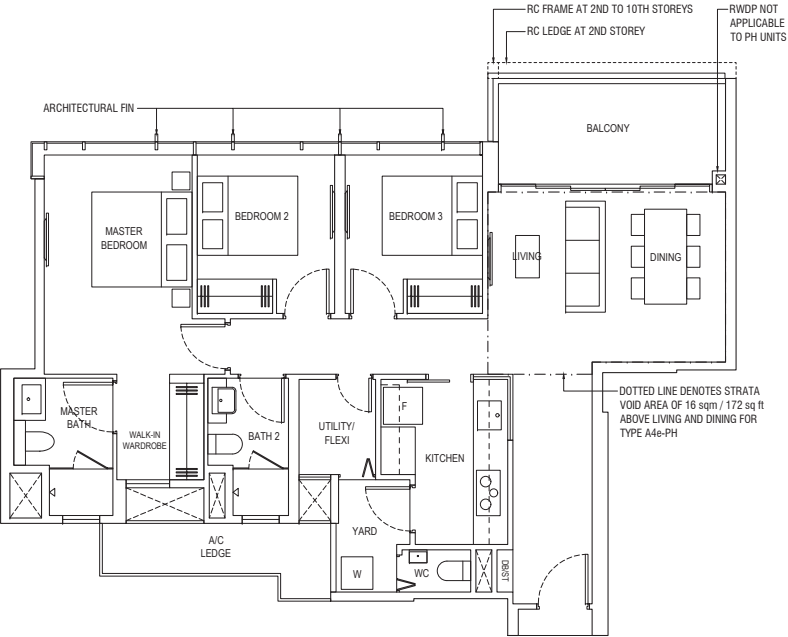


Area includes air-con (A/C) ledge, balcony and strata void where applicable. Some units are mirror images of the apartment plans shown in the brochure. Please refer to the key plan for orientation. The plans are subject to change as may be approved by relevant authorities. All floor plans are approximate measurements only and are subject to government re-survey. The balcony shall not be enclosed unless with the approved balcony screen. For an illustration of the approved balcony screen, please refer to the diagram annexed hereto as "Annexure A".

Type A4e

105 sqm / 1130 sq ft

BLK 22  
#02-04 to #09-04



Area includes air-con (A/C) ledge, balcony and strata void where applicable. Some units are mirror images of the apartment plans shown in the brochure. Please refer to the key plan for orientation. The plans are subject to change as may be approved by relevant authorities. All floor plans are approximate measurements only and are subject to government re-survey. The balcony shall not be enclosed unless with the approved balcony screen. For an illustration of the approved balcony screen, please refer to the diagram annexed hereto as "Annexure A".

Type A4e-PH

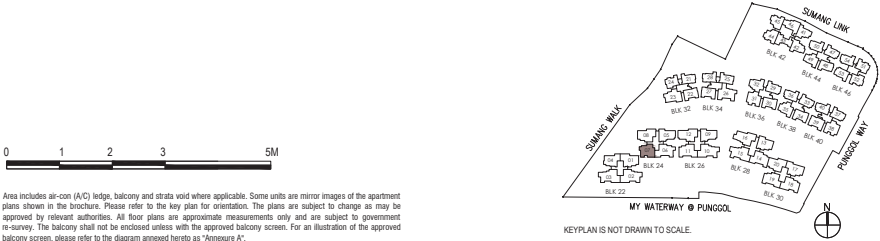
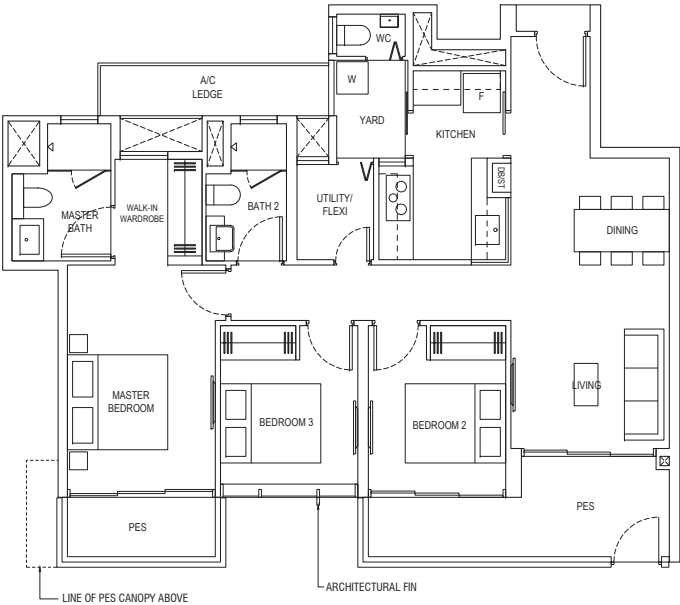
121 sqm / 1302 sq ft  
INCLUDING STRATA VOID OF 16 sqm / 172 sq ft  
ABOVE LIVING & DINING, APPROXIMATE 4.5m  
FLOOR TO CEILING HEIGHT AT LIVING & DINING

BLK 22  
#10-04

Type A4f-P

107 sqm / 1152 sq ft

BLK 24  
#01-07



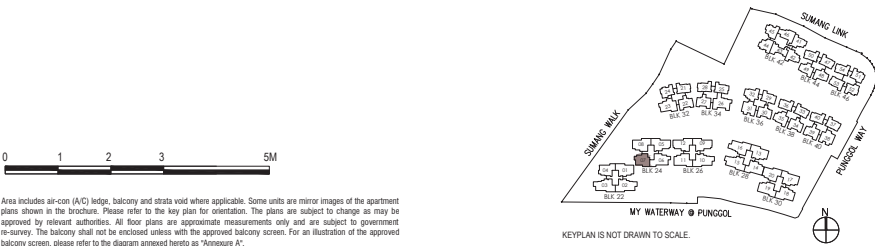
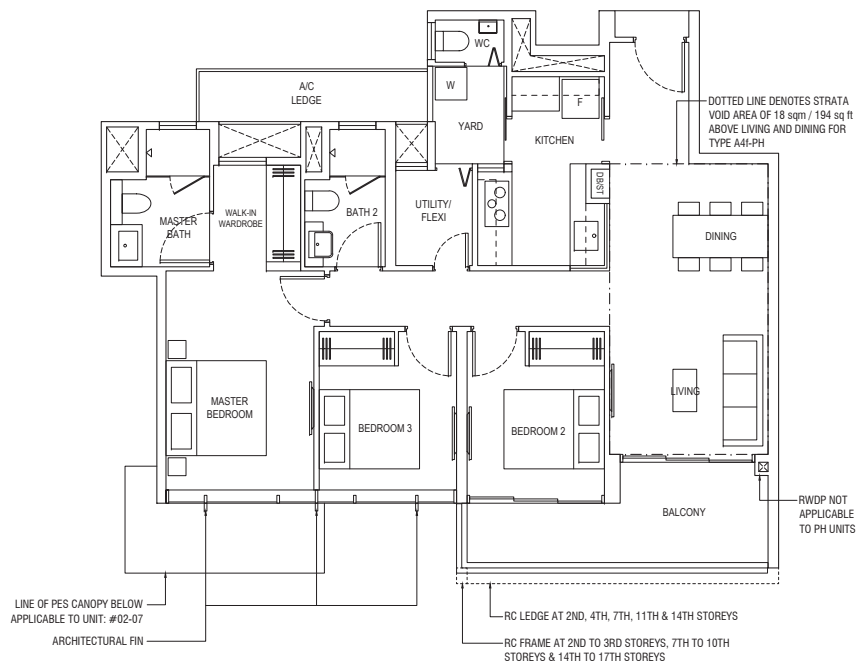
Area includes air-con (A/C) ledge, balcony and strata void where applicable. Some units are mirror images of the apartment plans shown in the brochure. Please refer to the key plan for orientation. The plans are subject to change as may be approved by relevant authorities. All floor plans are approximate measurements only and are subject to government re-survey. The balcony shall not be enclosed unless with the approved balcony screen. For an illustration of the approved balcony screen, please refer to the diagram annexed hereto as "Annexure A".

3-BEDROOM PREMIUM

Type A4f

103 sqm / 1109 sq ft

BLK 24  
#02-07 to #16-07



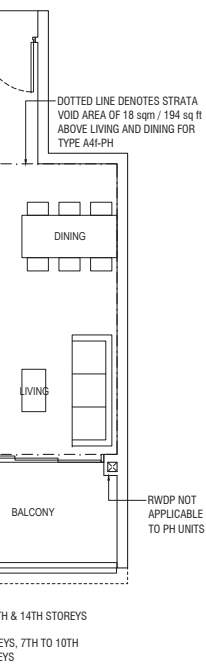
Area includes air-con (A/C) ledge, balcony and strata void where applicable. Some units are mirror images of the apartment plans shown in the brochure. Please refer to the key plan for orientation. The plans are subject to change as may be approved by relevant authorities. All floor plans are approximate measurements only and are subject to government re-survey. The balcony shall not be enclosed unless with the approved balcony screen. For an illustration of the approved balcony screen, please refer to the diagram annexed hereto as "Annexure A".

3-BEDROOM PREMIUM PENTHOUSE

Type A4f-PH

121 sqm / 1302 sq ft  
INCLUDING STRATA VOID OF 18 sqm / 194 sq ft  
ABOVE LIVING & DINING. APPROXIMATE 4.5m  
FLOOR TO CEILING HEIGHT AT LIVING & DINING

BLK 24  
#17-07

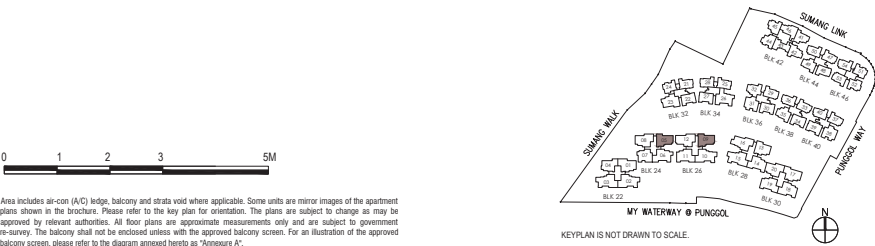
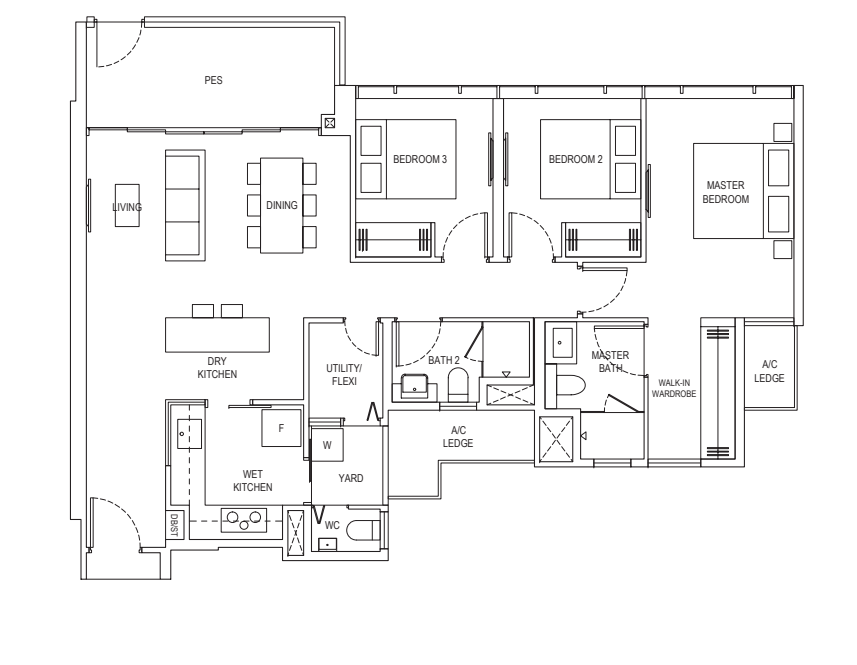


3-BEDROOM PREMIUM

Type A4g-P

112 sqm / 1206 sq ft

BLK 24  
#02-05  
BLK 26  
#02-09



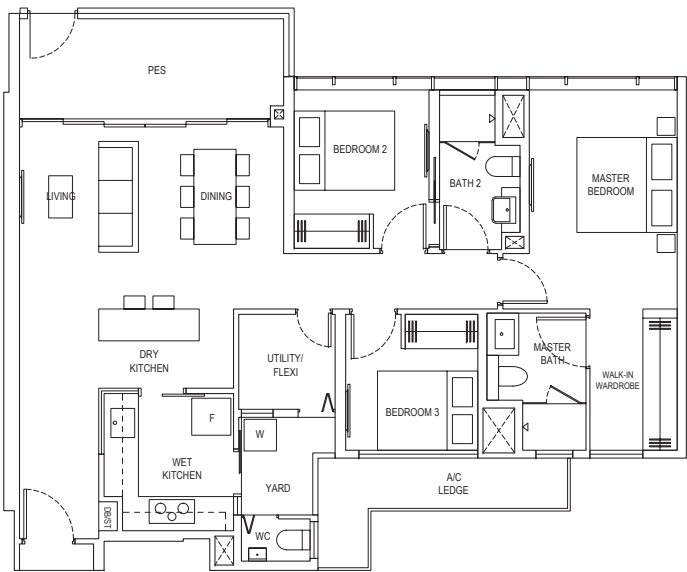
Area includes air-con (A/C) ledge, balcony and strata void where applicable. Some units are mirror images of the apartment plans shown in the brochure. Please refer to the key plan for orientation. The plans are subject to change as may be approved by relevant authorities. All floor plans are approximate measurements only and are subject to government re-survey. The balcony shall not be enclosed unless with the approved balcony screen. For an illustration of the approved balcony screen, please refer to the diagram annexed hereto as "Annexure A".

3-BEDROOM PREMIUM

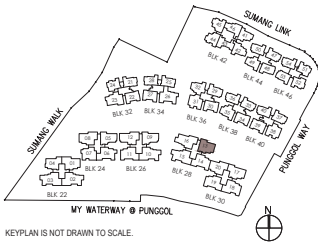
Type A4h-P

113 sqm / 1216 sq ft

BLK 28  
#02-13



Area includes air-con (A/C) ledge, balcony and strata void where applicable. Some units are mirror images of the apartment plans shown in the brochure. Please refer to the key plan for orientation. The plans are subject to change as may be approved by relevant authorities. All floor plans are approximate measurements only and are subject to government re-survey. The balcony shall not be enclosed unless with the approved balcony screen. For an illustration of the approved balcony screen, please refer to the diagram annexed hereto as "Annexure A".



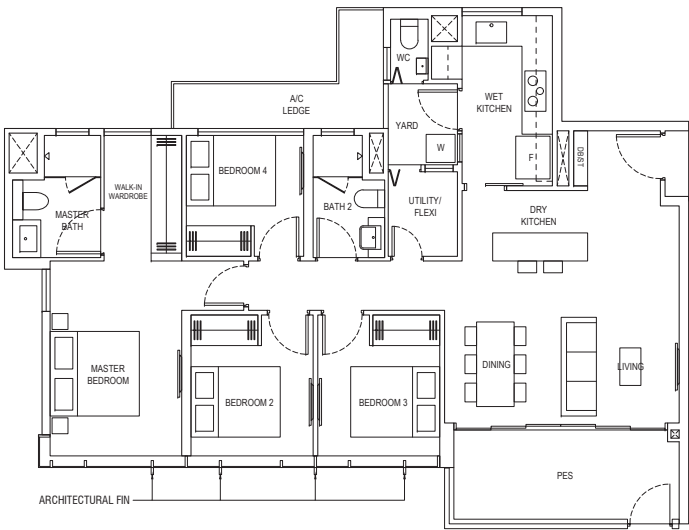
KEYPLAN IS NOT DRAWN TO SCALE.

4-BEDROOM PREMIUM

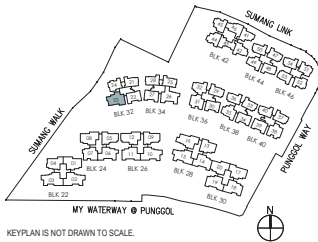
Type B1-P

121 sqm / 1302 sq ft

BLK 32  
#02-23



Area includes air-con (A/C) ledge, balcony and strata void where applicable. Some units are mirror images of the apartment plans shown in the brochure. Please refer to the key plan for orientation. The plans are subject to change as may be approved by relevant authorities. All floor plans are approximate measurements only and are subject to government re-survey. The balcony shall not be enclosed unless with the approved balcony screen. For an illustration of the approved balcony screen, please refer to the diagram annexed hereto as "Annexure A".



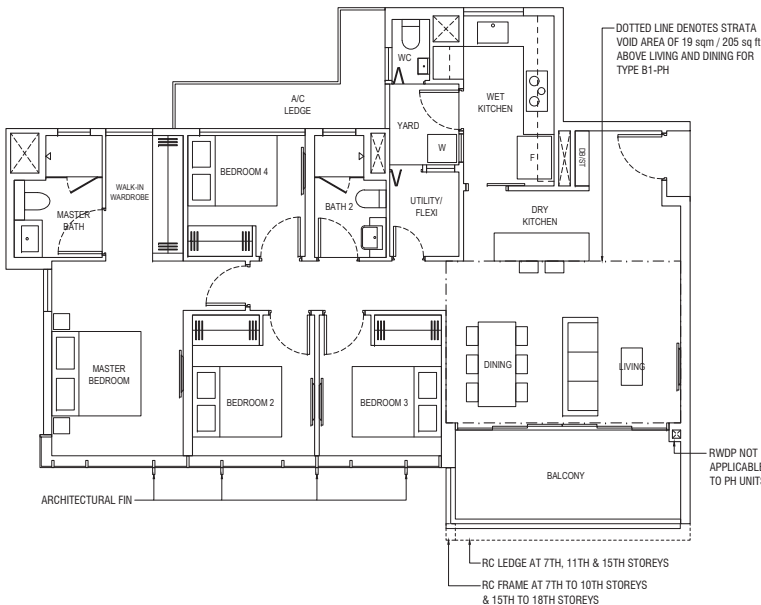
KEYPLAN IS NOT DRAWN TO SCALE.



Type B1

121 sqm / 1302 sq ft

BLK 32  
#03-23 to #17-23



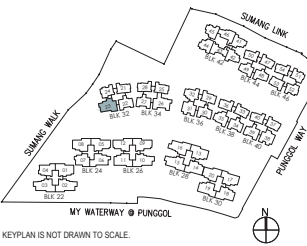
0 1 2 3 5M

Area includes air-con (A/C) ledge, balcony and strata void where applicable. Some units are mirror images of the apartment plans shown in the brochure. Please refer to the key plan for orientation. The plans are subject to change as may be approved by relevant authorities. All floor plans are approximate measurements only and are subject to government re-survey. The balcony shall not be enclosed unless with the approved balcony screen. For an illustration of the approved balcony screen, please refer to the diagram annexed hereto as "Annexure A".

Type B1-PH

140 sqm / 1507 sq ft  
INCLUDING STRATA VOID OF 19 sqm / 205 sq ft  
ABOVE LIVING & DINING. APPROXIMATE 4.5m  
FLOOR TO CEILING HEIGHT AT LIVING & DINING

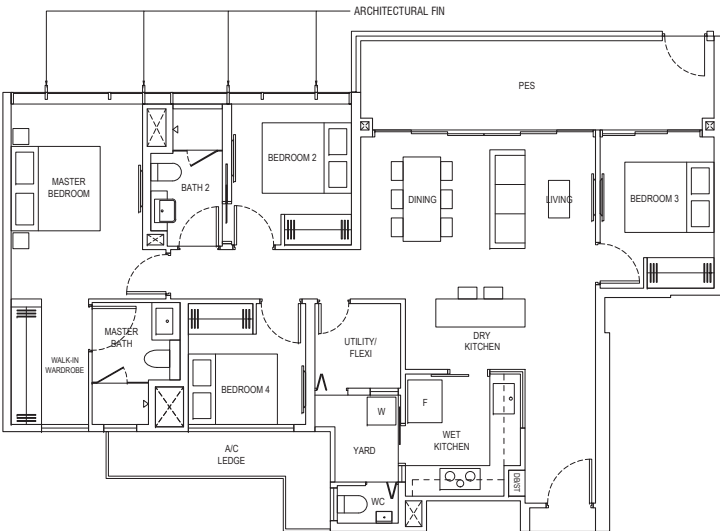
BLK 32  
#18-23



Type B2-P1

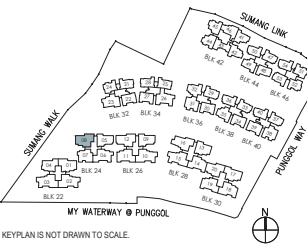
126 sqm / 1356 sq ft

BLK 24  
#02-08



0 1 2 3 5M

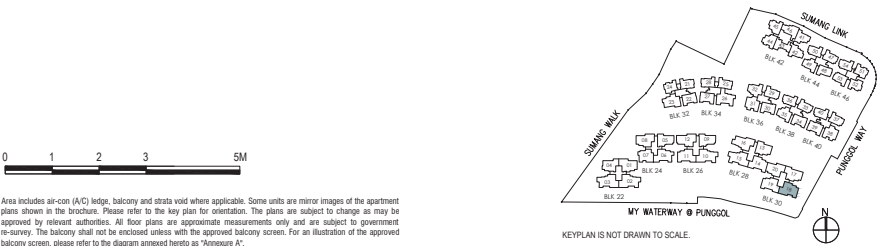
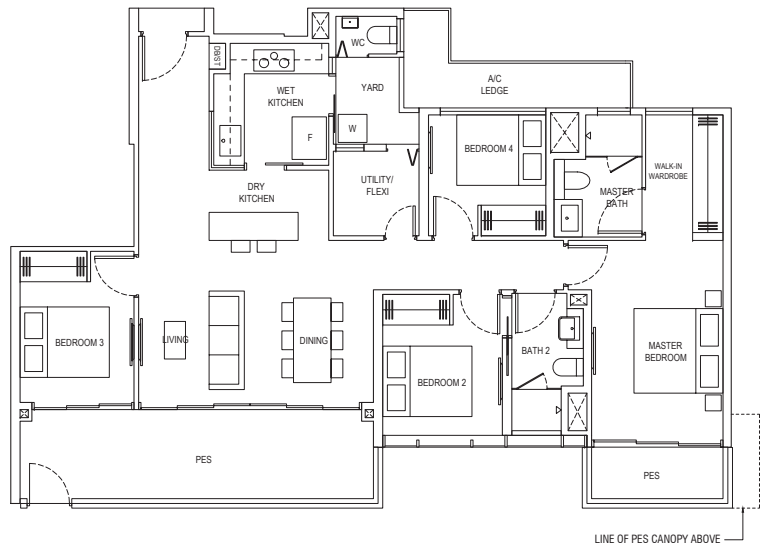
Area includes air-con (A/C) ledge, balcony and strata void where applicable. Some units are mirror images of the apartment plans shown in the brochure. Please refer to the key plan for orientation. The plans are subject to change as may be approved by relevant authorities. All floor plans are approximate measurements only and are subject to government re-survey. The balcony shall not be enclosed unless with the approved balcony screen. For an illustration of the approved balcony screen, please refer to the diagram annexed hereto as "Annexure A".



Type B2-P2

130 sqm / 1399 sq ft

BLK 30  
#01-18

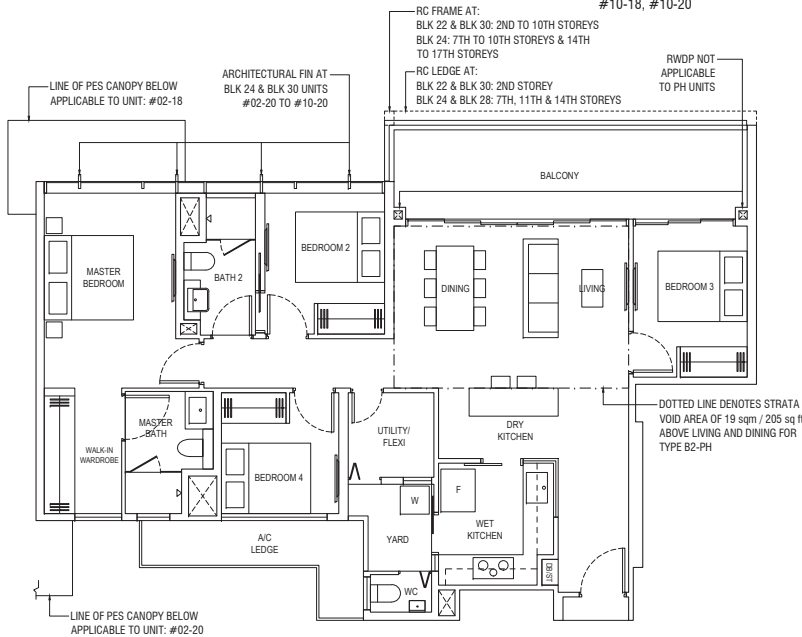


Area includes air-con (A/C) ledge, balcony and strata void where applicable. Some units are mirror images of the apartment plans shown in the brochure. Please refer to the key plan for orientation. The plans are subject to change as may be approved by relevant authorities. All floor plans are approximate measurements only and are subject to government re-survey. The balcony shall not be enclosed unless with the approved balcony screen. For an illustration of the approved balcony screen, please refer to the diagram annexed hereto as "Annexure A".

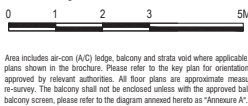
Type B2

126 sqm / 1356 sq ft

BLK 22  
#02-01\* to #09-01\*  
BLK 24  
#03-08 to #16-08  
BLK 28  
#03-13\* to #16-13\*  
BLK 30  
#02-18 to #09-18, #02-20 to #09-20



\*Mirror Image

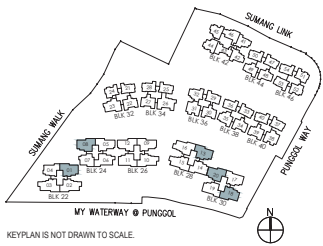


Area includes air-con (A/C) ledge, balcony and strata void where applicable. Some units are mirror images of the apartment plans shown in the brochure. Please refer to the key plan for orientation. The plans are subject to change as may be approved by relevant authorities. All floor plans are approximate measurements only and are subject to government re-survey. The balcony shall not be enclosed unless with the approved balcony screen. For an illustration of the approved balcony screen, please refer to the diagram annexed hereto as "Annexure A".

Type B2-PH

145 sqm / 1561 sq ft  
INCLUDING STRATA VOID OF 19 sqm / 205 sq ft  
ABOVE LIVING & DINING. APPROXIMATE 4.5m  
FLOOR TO CEILING HEIGHT AT LIVING & DINING

BLK 22  
#10-01\*  
BLK 24  
#17-08  
BLK 28  
#17-13\*  
BLK 30  
#10-18, #10-20

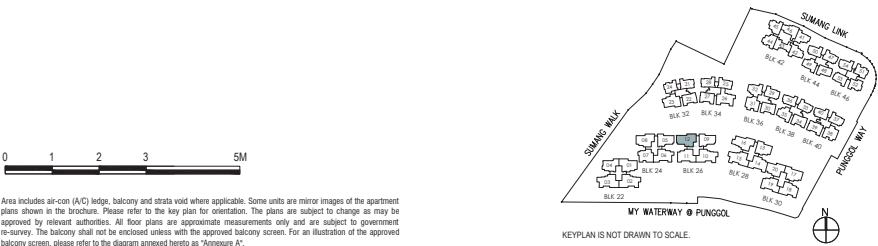
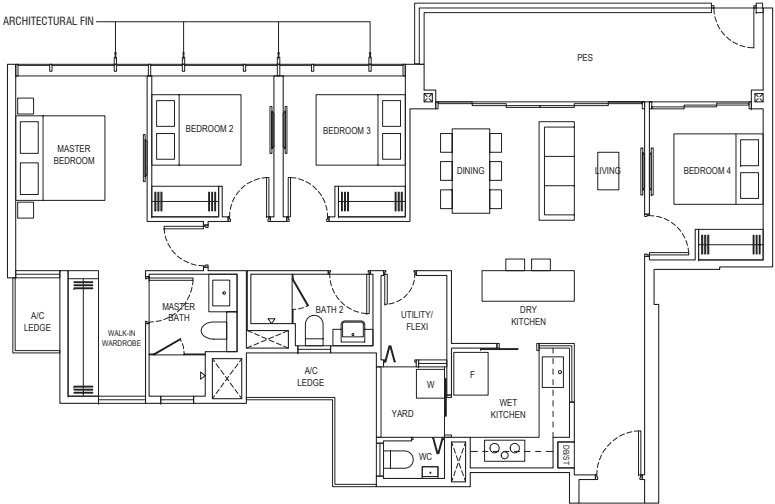


Area includes air-con (A/C) ledge, balcony and strata void where applicable. Some units are mirror images of the apartment plans shown in the brochure. Please refer to the key plan for orientation. The plans are subject to change as may be approved by relevant authorities. All floor plans are approximate measurements only and are subject to government re-survey. The balcony shall not be enclosed unless with the approved balcony screen. For an illustration of the approved balcony screen, please refer to the diagram annexed hereto as "Annexure A".

Type B3-P

127 sqm / 1367 sq ft

BLK 26  
#02-12



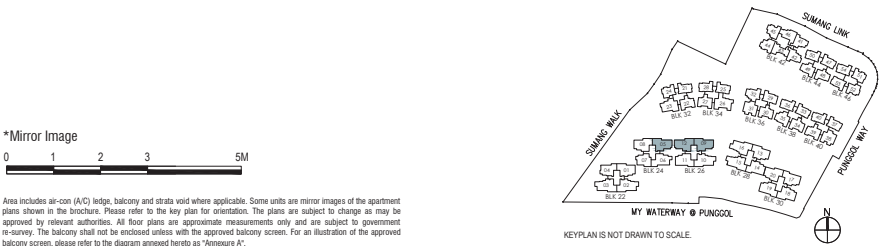
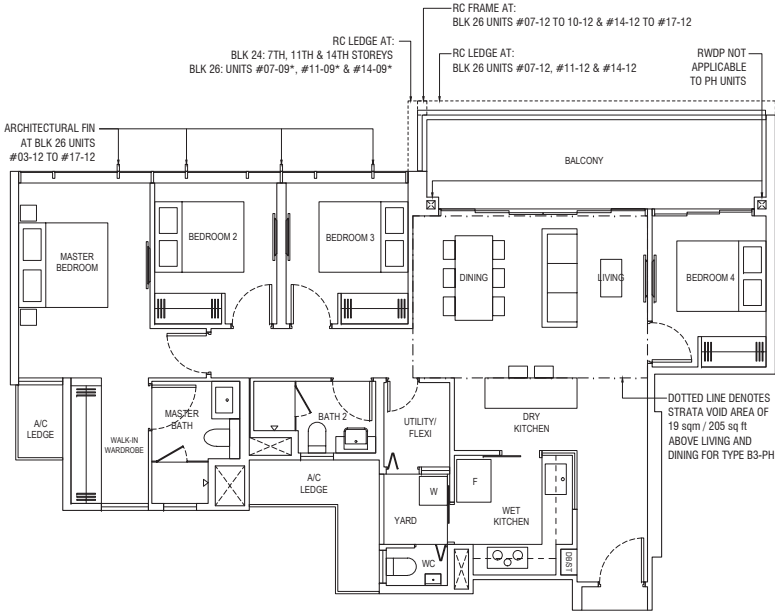
Area includes air-con (A/C) ledge, balcony and strata void where applicable. Some units are mirror images of the apartment plans shown in the brochure. Please refer to the key plan for orientation. The plans are subject to change as may be approved by relevant authorities. All floor plans are approximate measurements only and are subject to government re-survey. The balcony shall not be enclosed unless with the approved balcony screen. For an illustration of the approved balcony screen, please refer to the diagram annexed hereto as "Annexure A".

KEYPLAN IS NOT DRAWN TO SCALE.

Type B3

127 sqm / 1367 sq ft

BLK 24  
#03-05\* to #16-05\*  
BLK 26  
#03-09\* to #16-09\*, #03-12 to #16-12



\*Mirror Image

Area includes air-con (A/C) ledge, balcony and strata void where applicable. Some units are mirror images of the apartment plans shown in the brochure. Please refer to the key plan for orientation. The plans are subject to change as may be approved by relevant authorities. All floor plans are approximate measurements only and are subject to government re-survey. The balcony shall not be enclosed unless with the approved balcony screen. For an illustration of the approved balcony screen, please refer to the diagram annexed hereto as "Annexure A".

KEYPLAN IS NOT DRAWN TO SCALE.

Type B3-PH

146 sqm / 1572 sq ft  
INCLUDING STRATA VOID OF 19 sqm / 205 sq ft  
ABOVE LIVING & DINING. APPROXIMATE 4.5m  
FLOOR TO CEILING HEIGHT AT LIVING & DINING

BLK 24  
#17-05\*  
BLK 26  
#17-09\*, #17-12



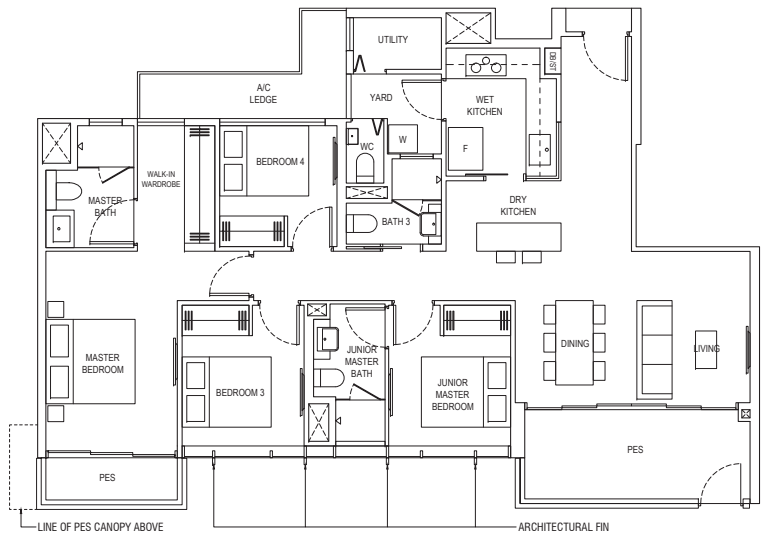
RC LEDGE AT:  
BLK 26 UNITS #07-12 TO 10-12 & #14-12 TO #17-12  
RC LEDGE AT:  
BLK 24: 7TH, 11TH & 14TH STOREYS  
BLK 26: UNITS #07-09\*, #11-09\* & #14-09\*  
RC LEDGE AT:  
BLK 26 UNITS #07-12, #11-12 & #14-12  
RWDP NOT APPLICABLE TO PH UNITS  
DOTTED LINE DENOTES STRATA VOID AREA OF 19 sqm / 205 sq ft ABOVE LIVING AND DINING FOR TYPE B3-PH

4-BEDROOM PREMIUM

Type B4-P1

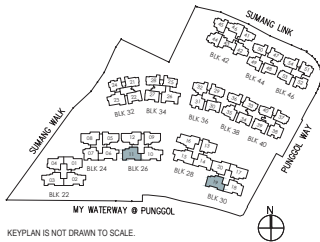
127 sqm / 1367 sq ft

BLK 26  
#01-11  
BLK 30  
#01-19



0 1 2 3 5M

Area includes air-con (A/C) ledge, balcony and strata void where applicable. Some units are mirror images of the apartment plans shown in the brochure. Please refer to the key plan for orientation. The plans are subject to change as may be approved by relevant authorities. All floor plans are approximate measurements only and are subject to government re-survey. The balcony shall not be enclosed unless with the approved balcony screen. For an illustration of the approved balcony screen, please refer to the diagram annexed hereto as "Annexure A".

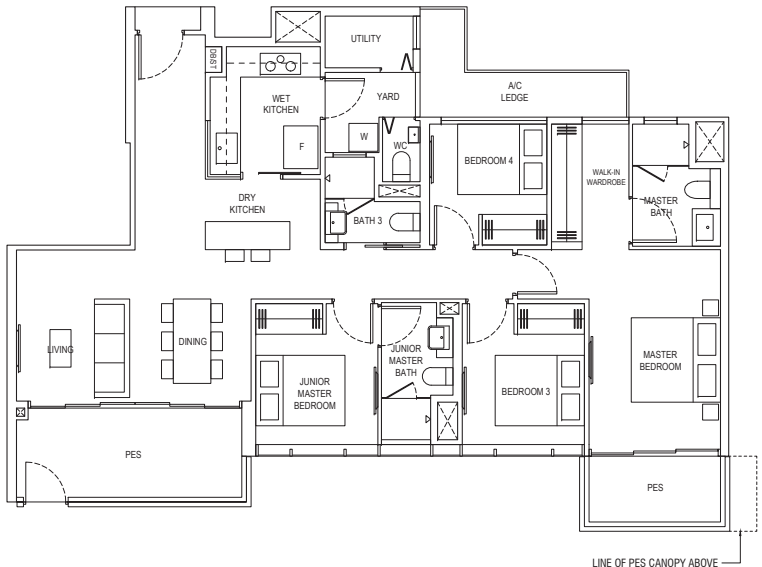


4-BEDROOM PREMIUM

Type B4-P2

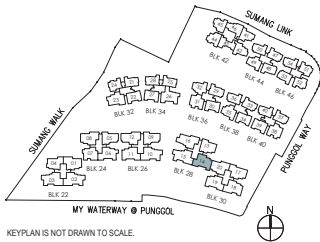
129 sqm / 1389 sq ft

BLK 28  
#01-14



0 1 2 3 5M

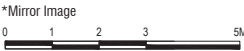
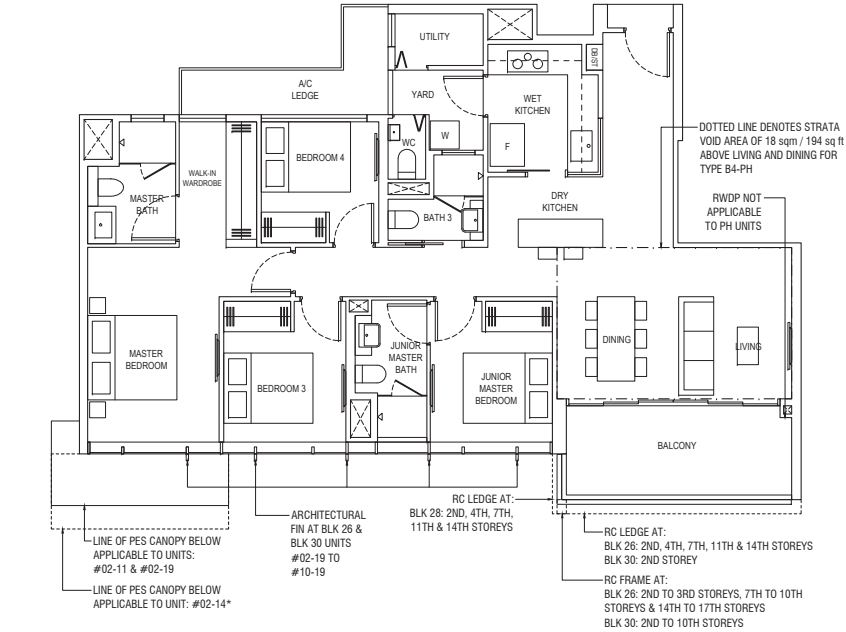
Area includes air-con (A/C) ledge, balcony and strata void where applicable. Some units are mirror images of the apartment plans shown in the brochure. Please refer to the key plan for orientation. The plans are subject to change as may be approved by relevant authorities. All floor plans are approximate measurements only and are subject to government re-survey. The balcony shall not be enclosed unless with the approved balcony screen. For an illustration of the approved balcony screen, please refer to the diagram annexed hereto as "Annexure A".



Type B4

124 sqm / 1335 sq ft

BLK 26  
#02-11 to #16-11  
BLK 28  
#02-14\* to #16-14\*  
BLK 30  
#02-17 to #09-17, #02-19 to #09-19

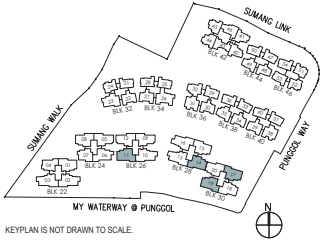


Area includes air-con (A/C) ledge, balcony and strata void where applicable. Some units are mirror images of the apartment plans shown in the brochure. Please refer to the key plan for orientation. The plans are subject to change as may be approved by relevant authorities. All floor plans are approximate measurements only and are subject to government re-survey. The balcony shall not be enclosed unless with the approved balcony screen. For an illustration of the approved balcony screen, please refer to the diagram annexed hereto as "Annexure A".

Type B4-PH

142 sqm / 1528 sq ft  
INCLUDING STRATA VOID OF 18 sqm / 194 sq ft  
ABOVE LIVING & DINING, APPROXIMATE 4.5m  
FLOOR TO CEILING HEIGHT AT LIVING & DINING

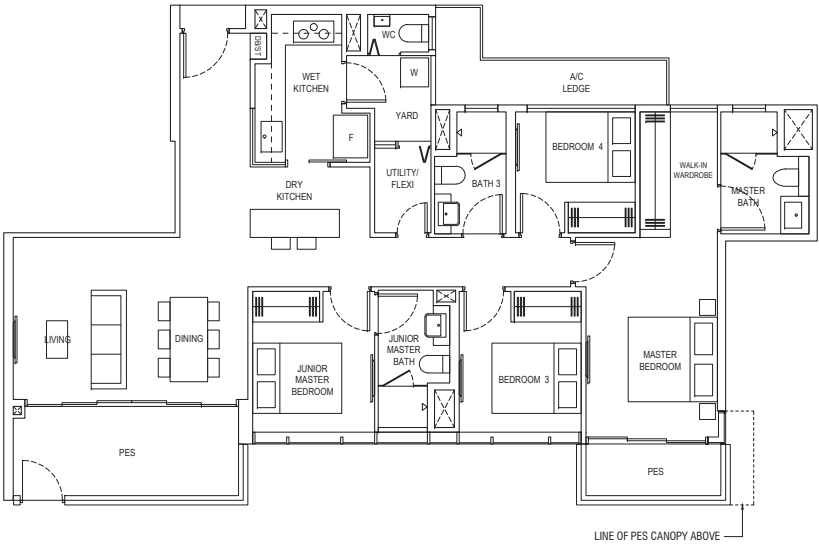
BLK 26  
#17-11  
BLK 28  
#17-14\*  
BLK 30  
#10-17, #10-19



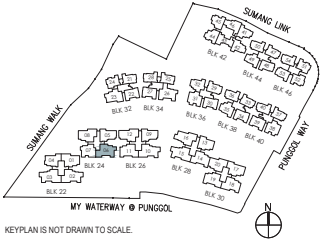
Type B5-P

131 sqm / 1410 sq ft

BLK 24  
#01-06



Area includes air-con (A/C) ledge, balcony and strata void where applicable. Some units are mirror images of the apartment plans shown in the brochure. Please refer to the key plan for orientation. The plans are subject to change as may be approved by relevant authorities. All floor plans are approximate measurements only and are subject to government re-survey. The balcony shall not be enclosed unless with the approved balcony screen. For an illustration of the approved balcony screen, please refer to the diagram annexed hereto as "Annexure A".



4-BEDROOM PREMIUM

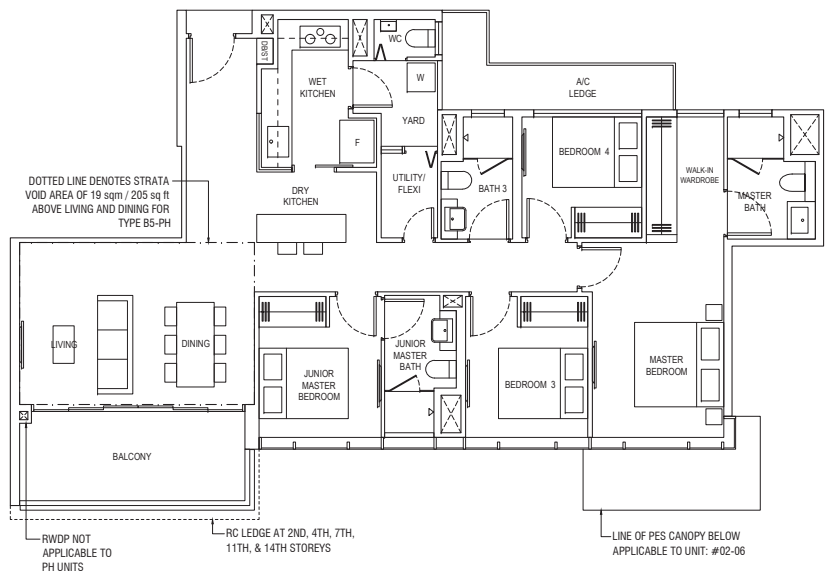
4-BEDROOM PREMIUM PENTHOUSE

5-BEDROOM PREMIUM

Type B5

127 sqm / 1367 sq ft

BLK 24  
#02-06 to #16-06



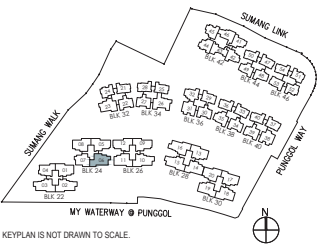
0 1 2 3 5M

Area includes air-con (A/C) ledge, balcony and strata void where applicable. Some units are mirror images of the apartment plans shown in the brochure. Please refer to the key plan for orientation. The plans are subject to change as may be approved by relevant authorities. All floor plans are approximate measurements only and are subject to government re-survey. The balcony shall not be enclosed unless with the approved balcony screen. For an illustration of the approved balcony screen, please refer to the diagram annexed hereto as "Annexure A".

Type B5-PH

146 sqm / 1572 sq ft  
INCLUDING STRATA VOID OF 19 sqm / 205 sq ft  
ABOVE LIVING & DINING. APPROXIMATE 4.5m  
FLOOR TO CEILING HEIGHT AT LIVING & DINING

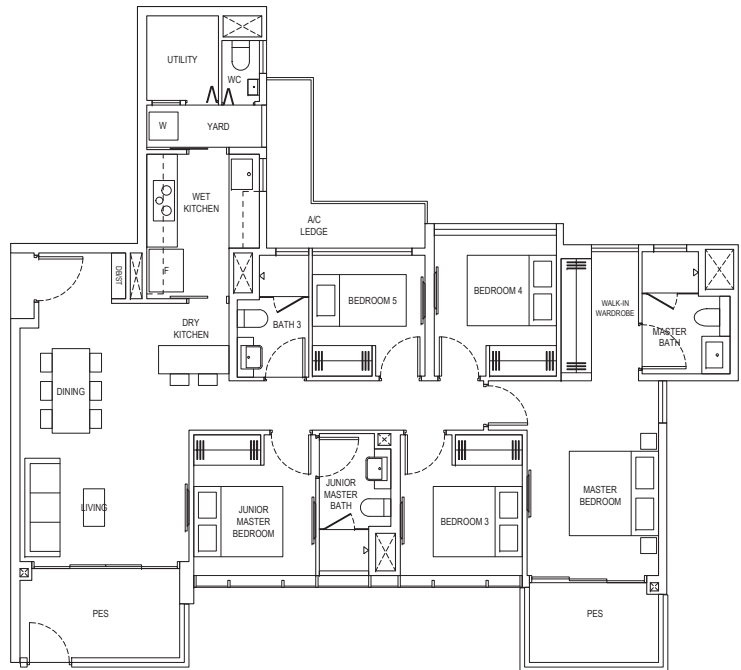
BLK 24  
#17-06



Type C1-P

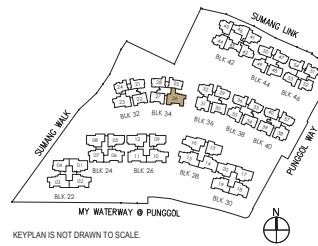
133 sqm / 1432 sq ft

BLK 34  
#02-26



0 1 2 3 5M

Area includes air-con (A/C) ledge, balcony and strata void where applicable. Some units are mirror images of the apartment plans shown in the brochure. Please refer to the key plan for orientation. The plans are subject to change as may be approved by relevant authorities. All floor plans are approximate measurements only and are subject to government re-survey. The balcony shall not be enclosed unless with the approved balcony screen. For an illustration of the approved balcony screen, please refer to the diagram annexed hereto as "Annexure A".



5-BEDROOM PREMIUM

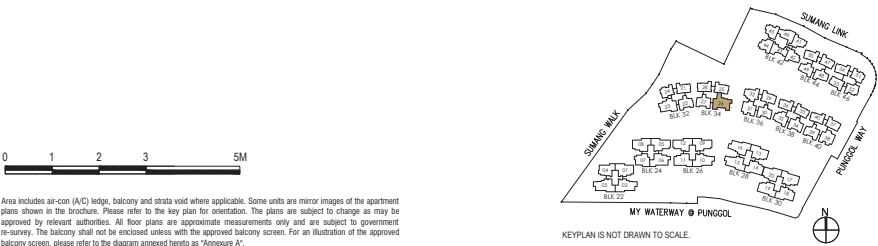
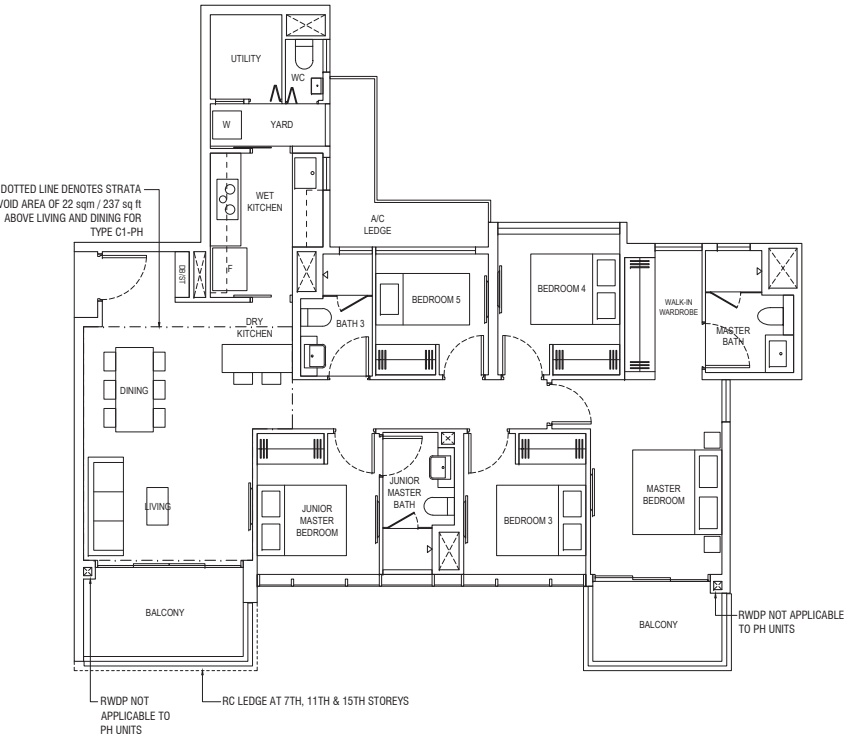
5-BEDROOM PREMIUM PENTHOUSE

5-BEDROOM PREMIUM

Type C1

133 sqm / 1432 sq ft

BLK 34  
#03-26 to #17-26



Area includes air-con (A/C) ledge, balcony and strata void where applicable. Some units are mirror images of the apartment plans shown in the brochure. Please refer to the key plan for orientation. The plans are subject to change as may be approved by relevant authorities. All floor plans are approximate measurements only and are subject to government re-survey. The balcony shall not be enclosed unless with the approved balcony screen. For an illustration of the approved balcony screen, please refer to the diagram annexed hereto as "Annexure A".

Type C1-PH

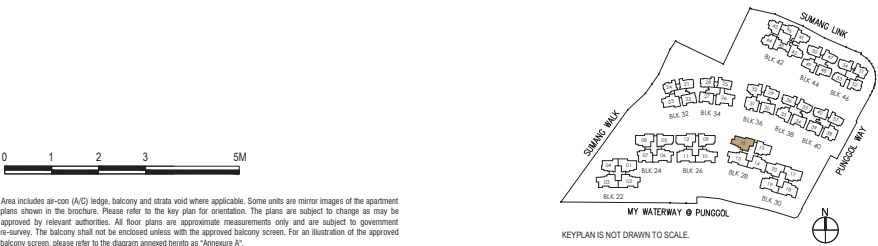
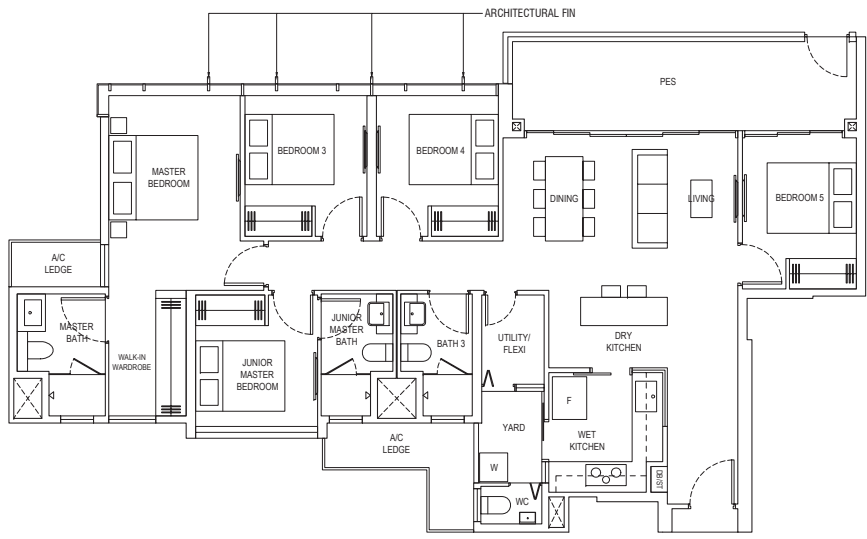
155 sqm / 1668 sq ft  
INCLUDING STRATA VOID OF 22 sqm / 237 sq ft  
ABOVE LIVING & DINING. APPROXIMATE 4.5m  
FLOOR TO CEILING HEIGHT AT LIVING & DINING

BLK 34  
#18-26

Type C2-P1

140 sqm / 1507 sq ft

BLK 28  
#02-16



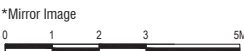
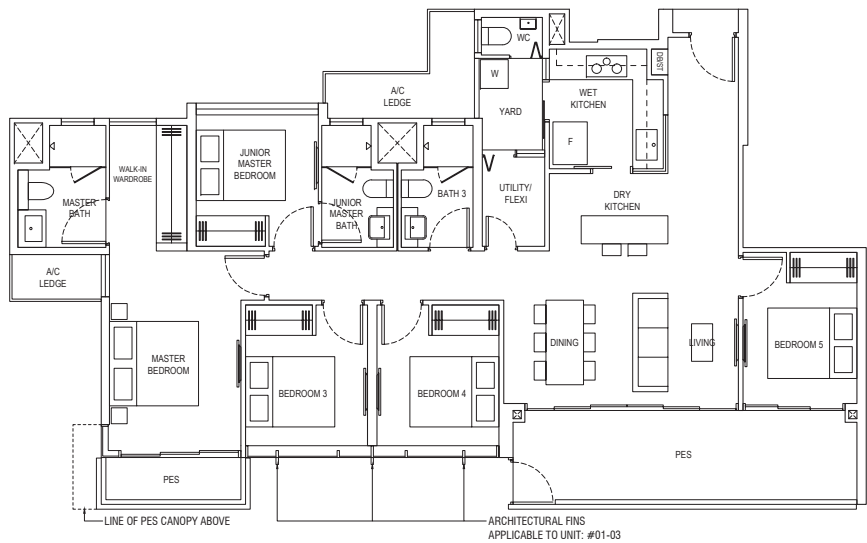
Area includes air-con (A/C) ledge, balcony and strata void where applicable. Some units are mirror images of the apartment plans shown in the brochure. Please refer to the key plan for orientation. The plans are subject to change as may be approved by relevant authorities. All floor plans are approximate measurements only and are subject to government re-survey. The balcony shall not be enclosed unless with the approved balcony screen. For an illustration of the approved balcony screen, please refer to the diagram annexed hereto as "Annexure A".

5-BEDROOM PREMIUM

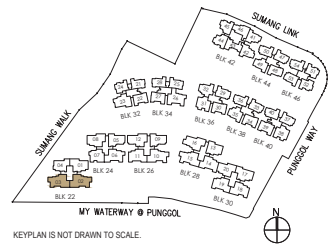
Type C2-P2

143 sqm / 1539 sq ft

BLK 22  
#01-02\*, #01-03



Area includes air-con (A/C) ledge, balcony and strata void where applicable. Some units are mirror images of the apartment plans shown in the brochure. Please refer to the key plan for orientation. The plans are subject to change as may be approved by relevant authorities. All floor plans are approximate measurements only and are subject to government re-survey. The balcony shall not be enclosed unless with the approved balcony screen. For an illustration of the approved balcony screen, please refer to the diagram annexed hereto as "Annexure A".

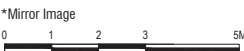
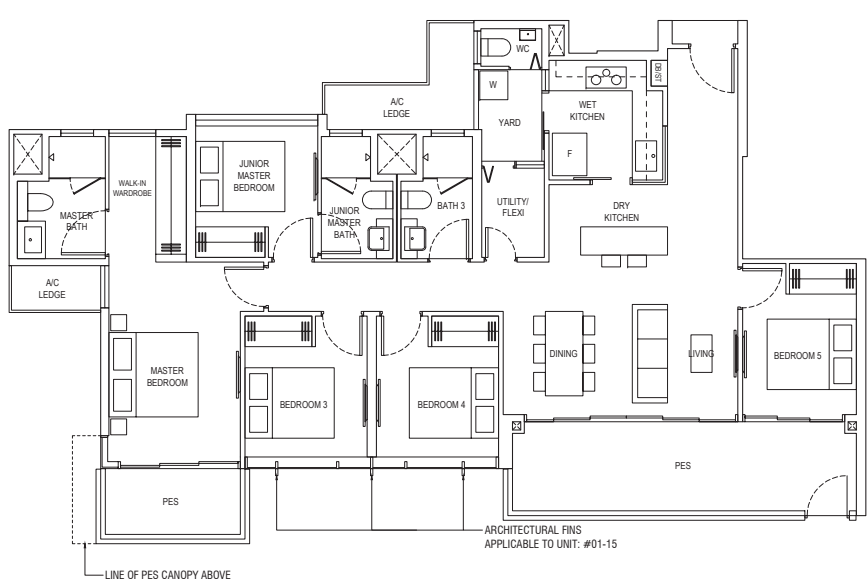


5-BEDROOM PREMIUM

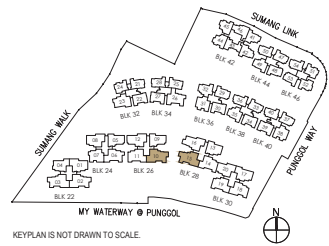
Type C2-P3

145 sqm / 1561 sq ft

BLK 26  
#01-10\*  
BLK 28  
#01-15



Area includes air-con (A/C) ledge, balcony and strata void where applicable. Some units are mirror images of the apartment plans shown in the brochure. Please refer to the key plan for orientation. The plans are subject to change as may be approved by relevant authorities. All floor plans are approximate measurements only and are subject to government re-survey. The balcony shall not be enclosed unless with the approved balcony screen. For an illustration of the approved balcony screen, please refer to the diagram annexed hereto as "Annexure A".





Type C2

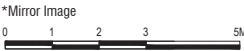
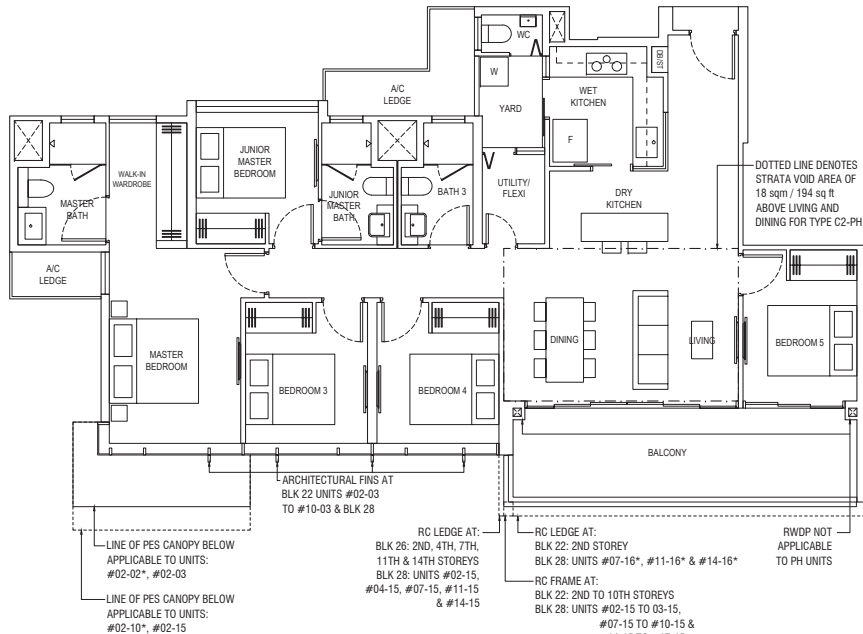
140 sqm / 1507 sq ft

BLK 22  
#02-02\* to #09-02\*, #02-03 to #09-03  
BLK 26  
#02-10\* to #16-10\*  
BLK 28  
#02-15 to #16-15, #03-16\* to #16-16\*

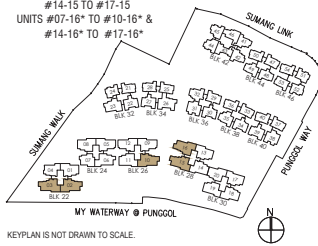
Type C2-PH

158 sqm / 1701 sq ft  
INCLUDING STRATA VOID OF 18 sqm / 194 sq ft  
ABOVE LIVING & DINING, APPROXIMATE 4.5m  
FLOOR TO CEILING HEIGHT AT LIVING & DINING

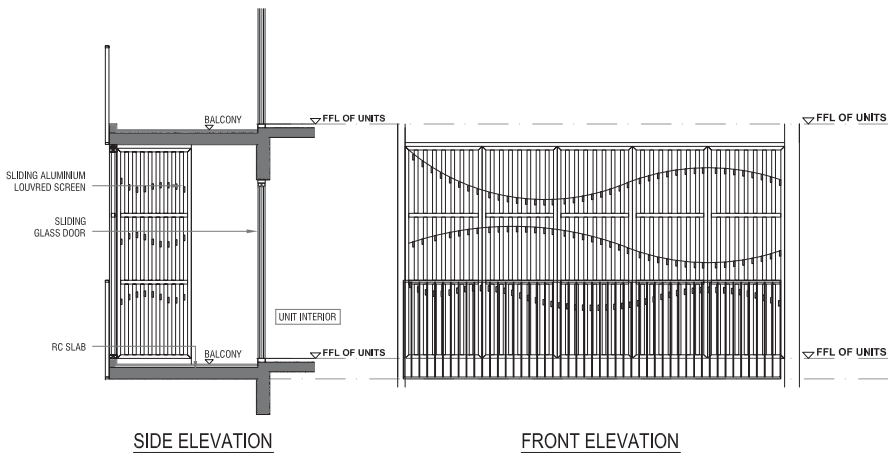
BLK 22  
#10-02\*, #10-03  
BLK 26  
#17-10\*  
BLK 28  
#17-15, #17-16\*



Area includes air-con (A/C) ledge, balcony and strata void where applicable. Some units are mirror images of the apartment plans shown in the brochure. Please refer to the key plan for orientation. The plans are subject to change as may be approved by relevant authorities. All floor plans are approximate measurements only and are subject to government re-survey. The balcony shall not be enclosed unless with the approved balcony screen. For an illustration of the approved balcony screen, please refer to the diagram annexed hereto as "Annexure A".



ANNEXURE A



Note:  
The balcony shall not be enclosed unless with the approved balcony screen as shown above. The cost of screen and installation shall be borne by the Purchaser.